

PATTY MADDEN

---

DIGITAL WALLCOVERING





PATTY MADDEN  
DIGITAL WALLCOVERING

luxesurfaces



## A PERSONAL NOTE

Despite a family history with deep roots in the garment industry, my first glimpse into NYC's garment district confirmed the apparel business was not for me. Though I designed my own clothes and had been accepted to Parsons for fashion design, it was only after I completed an interior design degree that my first big break in design and product specification set me on an entirely different path. As part of New York's Walker Group—a retail interior design company—an unforeseen opportunity was about to lead me outside my “certified” craft.

Unbeknownst to me, there was a product void in the market place; an absence of contemporary designs in wallcovering, textile and floor covering to decorate the modern retail environment. I began designing my own products for obvious voids and positive reception to my work meant I was able to supplement my meager designer income (read: I didn't have two nickels to rub together!) as a

freelance artist. Fortunately, my designs sold well and several products were included in numerous running lines. Demand continued to increase and in 1984 I left the interior design business and established Patty Madden Inc. to design products full time.

Over the ensuing years as a commercial artist and product designer, I focused on perfecting the analog process of surface design and the product development process. It was complex—far more complex than it is today. Tooling and cylinders had to be strategically designed and fabricated, an understanding of discreet color application was fundamental, and the entire process from concept to finished product was long. Analog products remain instrumental in the industry today and, undoubtedly, provided me a crucial foundation for expanding applications into both commercial and high-end residential interiors.

The onset of the digital revolution, however, with unimaginable color capacity, scale possibilities and near immediate rendering potential, has been a truly exhilarating gift. The integration of science and substrate has enabled me to take my art to a whole new level. This book is a tribute to the latest evolution of my design and a testimony to the fact that possibility is only limited by one's dreams.



# A DIGITAL RENAISSANCE

The creation of this book represents one small part of a much larger conversation; an exciting conversation, a conversation about the tension between the possible and the unimaginable...

It is a conversation about product development and how Patty Madden has positioned herself as a design pioneer leading the wallcovering industry from its roots in gravure fabrication into the emerging digital revolution.

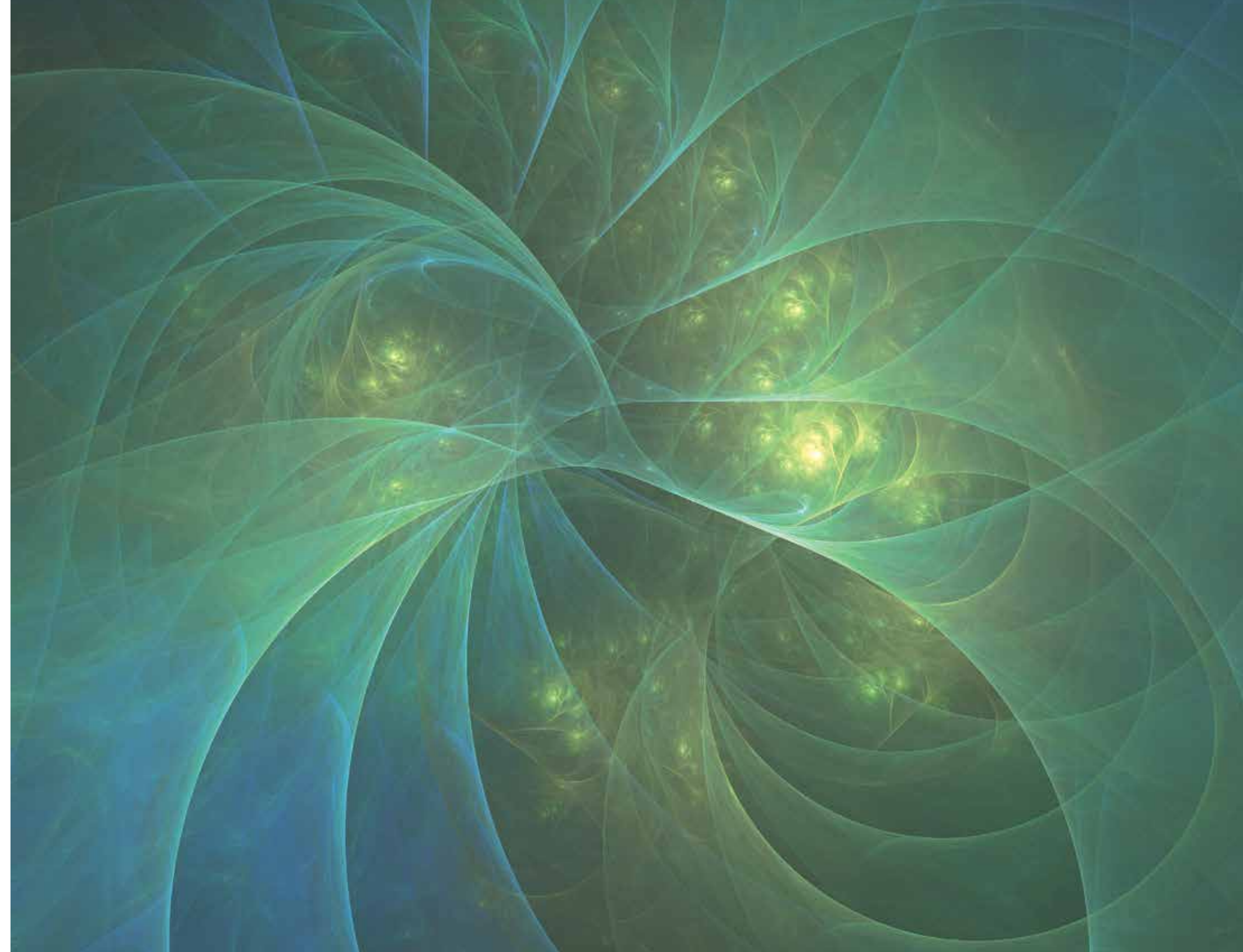
In 2003, a critical partnership with Luxe Surfaces encouraged an evolution of Patty's art. Able to visualize wallcovering product that did not yet exist, Patty worked with the most up-to-date computer technology available and a commitment to understanding the numerous layers of manufacturing. Her ability to visualize new applications for equipment resulted in proprietary effects.

Together with Luxe Surfaces, the Patty Madden brand of commercial wallcovering cemented a reputation for innovative, inimitable wallcovering design. Today the Patty Madden Wallcovering brand remains the forerunner in all aspects of wallcovering creativity and evolution.

The arrival of the digital era means former limitations on design expression have been eliminated. Patty can now enter into the fullness of her artistry. Early creative imaginings can be expressed in a full palette spectrum, unlimited scale possibilities, near immediate rendering potential, and on an array of new printing substrates. What was formerly impossible, Patty has translated into the possible.

Patty Madden Digital Wallcovering.

Design beyond belief.





# MEDIA

Luxe Surfaces and Patty Madden Digital offer two substrates strategically developed to work with our digital printing and ink system. Zaza and Zaza Mylar have been fabricated utilizing lenticular embossing (micro-finish engraving) and tip-printing to create a subtle cross-hatched, light refractive texture. These proprietary media contribute depth, dimension and durability so image impact is intensified.

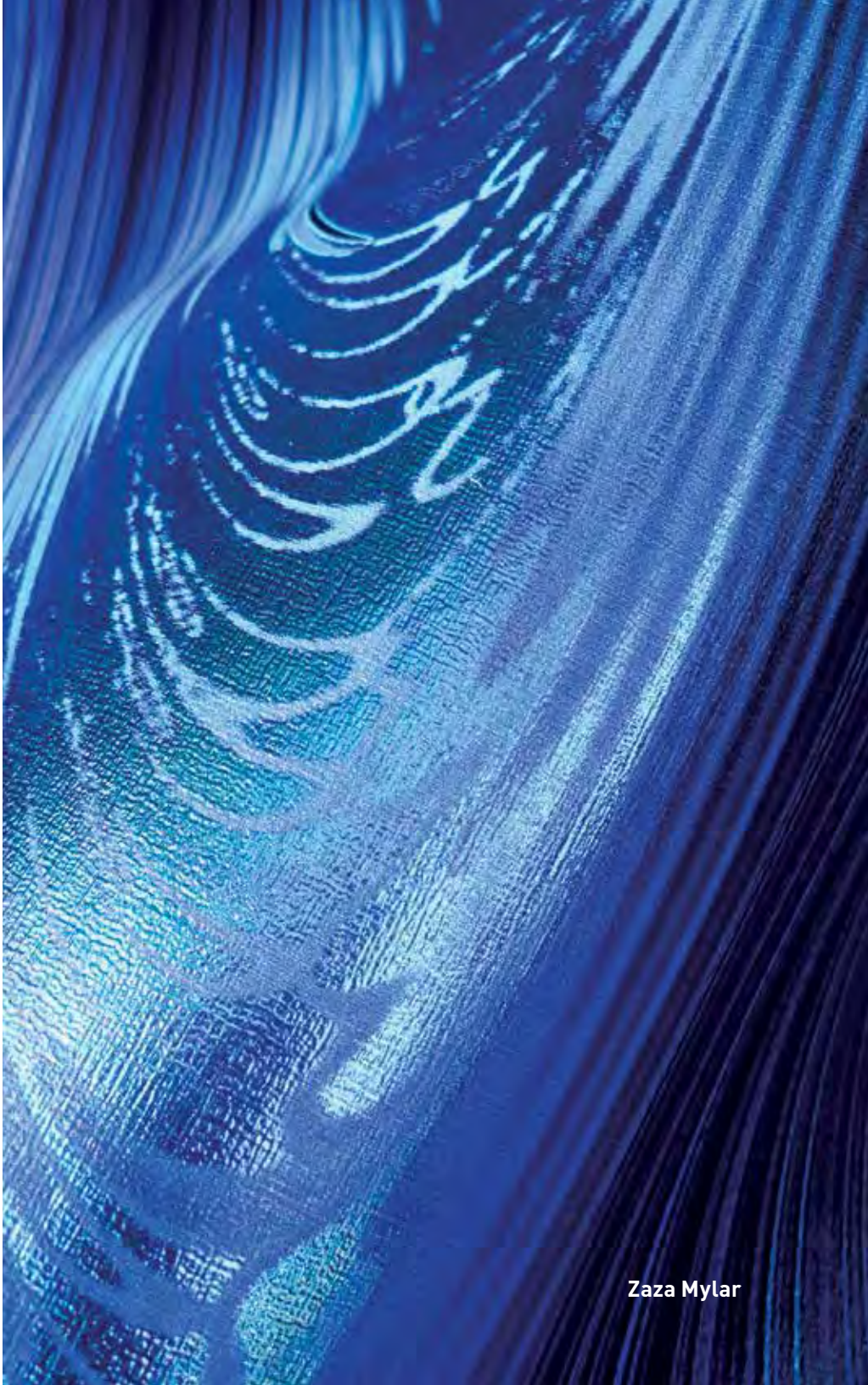
**ZAZA** a top seller for the last five years (and holding), —is a brilliant white, Type II, 20 oz. wallcovering media. 54 inches in width and backed with poly cotton Osnaburg, a commercial wallcovering, Zaza meets stringent fire code compliance and is mildew inhibiting. Zaza offers a modern media that boosts the colour energy and life of your digitally printed artwork.

**ZAZA MYLAR** is a reflective wallcovering fabricated of polyester film and a non-woven backing. This metallic sheeting—in combination with the lenticular embossing of Zaza—offers an unmatched luminosity to wall art. 54 inches wide, Zaza Mylar will capture the light in a space creating an almost kinetic energy across the surface of your imagery; an electric charge that “pulses” as it is observed at various angles.

Luxe Surfaces media have established histories of long-term performance and durability and are approved and proven for commercial and residential environments.



Zaza



Zaza Mylar





THE COLLECTION



# SPHERUS

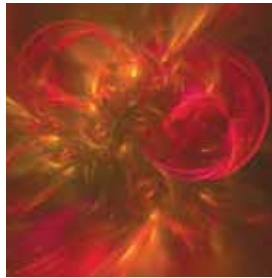
Surface tension, internal air and atmospheric forces, interact with delightful consequences. The effervescence of Spherus will take you back to earlier days; sunny afternoons running through the grass waving plastic wands screaming, “Look at this one!”



02



03



04

<b>COLLECTION</b>
Organic
<b>PATTERN TYPE</b>
Mural
<b>WIDTH</b>
54"/137 cm
<b>SCALE</b>
Customizable
<b>PRODUCT CODE</b>
LXD-SPH-01





# JADEITE

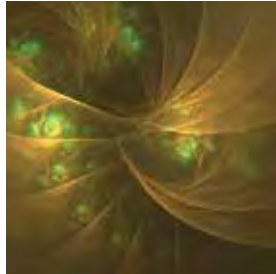
Inspired by the captivating hues of the ornamental mineral for which it is named, Jadeite is illuminated by the pearlescent quartz that can be found at its core; the result of hydration and metamorphic transformation that occurs at the Earth's mantle. Bathed for centuries by the moon's tidal force, translucent Jadeite is vertical ornament at its best.



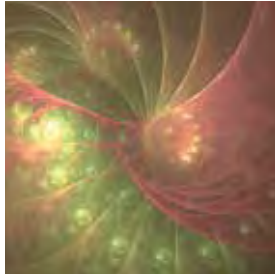
02



03



04



05

**COLLECTION**

Organic

**PATTERN TYPE**

Mural

**WIDTH**

54"/137 cm

**SCALE**

Customizable

**PRODUCT CODE**

LXD-JDT-01



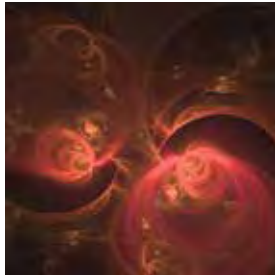


# SOLACE

Myth tells of a great tree growing at the center of the universe, branches piercing through human affairs, its boughs upholding the firmament with its stars and planets. Patty lyrically captures the flow of wisdom, knowledge, and truth, through magnificent roots that channel life into the evolution of the human family.



02



03



04



05

<b>COLLECTION</b>
Organic
<b>PATTERN TYPE</b>
Mural
<b>WIDTH</b>
54"/137 cm
<b>SCALE</b>
Customizable
<b>PRODUCT CODE</b>
LXD-SLC-01

01 →



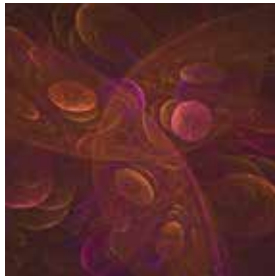


# ARCHIPELAGO

Iridescent hollow spheres break the surface with apparent impatience. This ascent from the ocean floor and its hidden shoals, will it yield potential treasure? Rich cerulean hues and pearlescence suggest anticipation and excitement.



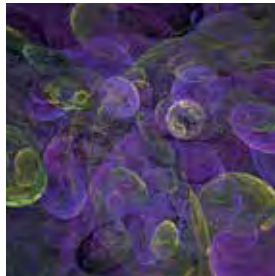
02



03



04



05

**COLLECTION**

Organic

**PATTERN TYPE**

Mural

**WIDTH**

54"/137 cm

**SCALE**

Customizable

**PRODUCT CODE**

LXD-ARC-01



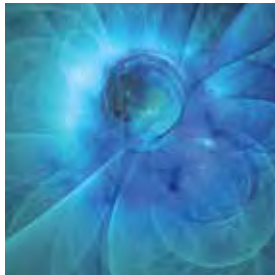


# SABATINI

Inspired by one of the most alluring experiences in dance, Sabatini sparks a passionate response. Often associated with smoky cafés, flamenco is all the more electrifying when the sounds of strumming guitars, pounding feet, and plaintive voices, fill the fresh evening air. A visit to one of Spain's most superb festivals left an indelible mark on Patty who captures the yearning sublimely.



02



03



04



05

## COLLECTION

Organic

## PATTERN TYPE

Mural

## WIDTH

54"/137 cm

## SCALE

Customizable

## PRODUCT CODE

LXD-SBT-01





# NEST

Nest's portrayal of nature's stunning, asymmetrical haven captures the beauty of woven, sculpted filaments, grass and feathers. Securely anchored within protective boughs, silken spiderwebs provide an ethereal softness that makes you want to crawl within its sanctuary.



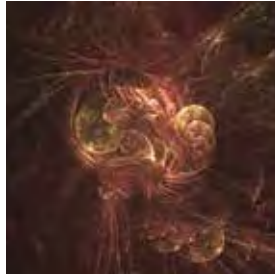
02



03



04



05

**COLLECTION**

Organic

**PATTERN TYPE**

Mural

**WIDTH**

54"/137 cm

**SCALE**

Customizable

**PRODUCT CODE**

LXD-NST-01



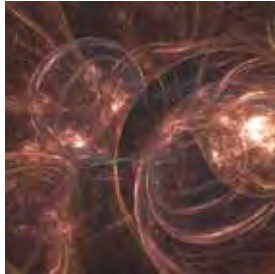


# SEPHORIS

Inspired by the relics of glass artisans, Sephoris finds its mystique in the history of glassblowing—an art form that has evolved since the middle of the first century BC. Patty, the “digital glass-worker,” morphs white hot, paper-thin luster and plays with glass’ fluidity.



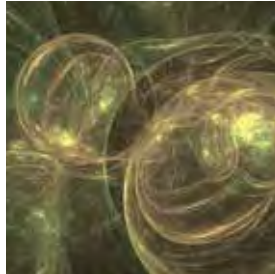
02



03



04



05

**COLLECTION**

Organic

**PATTERN TYPE**

Mural

**WIDTH**

54"/137 cm

**SCALE**

Customizable

**PRODUCT CODE**

LXD-SEP-01





# VOLO

The beauty of flight is magically captured in Volo. Despite expensive jets and giant airliners, there is no comparison to the grace and effortless movement of the bird. Patty digitally renders the luminescent wingspan in flight; curvilinear lift counteracting weight and the magic of angles in air. Volo—aerial artistry.



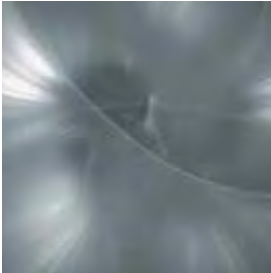
02



03



04



05

<b>COLLECTION</b>
Organic
<b>PATTERN TYPE</b>
Mural
<b>WIDTH</b>
54"/137 cm
<b>SCALE</b>
Customizable
<b>PRODUCT CODE</b>
LXD-VOL-01

01 →



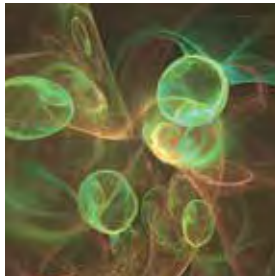


# MARBLE

Murano art glass is made of silica that becomes liquid at high temperatures. As the glass passes from a fluid to solid state, there is an interval when the glass is soft. At this juncture the “glass-master” pulls colour canes of aquamarine, gold and cobalt through the digital medium. Marble: liquefied art.



02



03



04



05

**COLLECTION**

Organic

**PATTERN TYPE**

Mural

**WIDTH**

54"/137 cm

**SCALE**

Customizable

**PRODUCT CODE**

LXD-MBL-01

01 →





# CHITANO

A flower—petals, filament, stamens. But come closer and experience the birth of idea; nascent potential. Chitano arises from an artistic journey challenging preconceived notion and intuition. It represents a momentary descent into the unknown and ultimately rewards the exploration of possibilities the moment darkness falls away and a new truth is revealed.



02



03



04



05

**COLLECTION**  
Organic

**PATTERN TYPE**  
Mural

**WIDTH**  
54"/137 cm

**SCALE**  
Customizable

**PRODUCT CODE**  
LXD-CTN-01





# METROPOLITAN

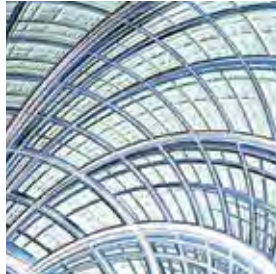
The melding of city and suburb is distinctly captured by Metropolitan’s curvilinear design. Once a specific center built on the foundation of trade, railway hubs, and industry, cities now integrate characteristics of suburbia: community, greenways, art and culture. Metropolitan represents a new type of urban—a new architecture. Metropolitan—the modern city in context.



02



03



04



05

<b>COLLECTION</b>
Architectural
<b>PATTERN TYPE</b>
Mural
<b>WIDTH</b>
54"/137 cm
<b>SCALE</b>
Customizable
<b>PRODUCT CODE</b>
LXD-MTP-01



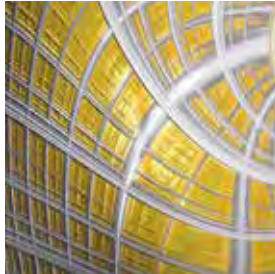


# FENESTRA

A liquefaction of classic architectural detailing with fairy tale! In a pure Carrollian sense, Alice stumbled into a bizarre alternate reality. To fall into the rabbit hole of Fenestra, however, is to become fascinated with a design whose curvilinear intrigue will drive you to distraction. Hello, Wonderland!



02



03



04



05

**COLLECTION**  
Architectural

**PATTERN TYPE**  
Mural

**WIDTH**  
54"/137 cm

**SCALE**  
Customizable

**PRODUCT CODE**  
LXD-FEN-01





# LUMEN

The compression of layer upon layer of deeply buried snow, hollowed out by wind, sun and water, forms the stirring beauty of glacial caves and the inspiration behind Lumen. Intrigued by the impact of the elements on these impermanent, ever evolving “cathedrals,” Patty beautifully captures a “half section” of ice wall luminous with sunlight and the reflection off water.



02



03



04



05

**COLLECTION**

Organic

**PATTERN TYPE**

Mural

**WIDTH**

54"/137 cm

**SCALE**

Customizable

**PRODUCT CODE**

LXD-LUM-01





# LIAISON

A bold array of colour; a pompous exhibition of prowess. With each colour more pristine, more exuberant than the previous, the “sashay” of Liaison is meant to entice and invite. Liaison. Go ahead. Accept the invitation.



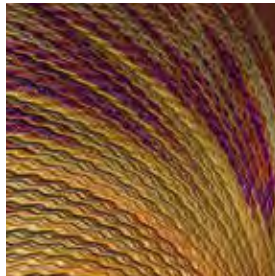
02



03



04



05

## COLLECTION

Organic

## PATTERN TYPE

Mural

## WIDTH

54"/137 cm

## SCALE

Customizable

## PRODUCT CODE

LXD-LIA-01

01 →





# SHARD

A lab microscope, unadorned windows, solid surfaces—each gifted with the treasures of atmospheric icing. Patty explores the various compositions of delicately branched patterns of ice crystal translated through digital artistry. Shard reveals the hidden interaction of temperature and water.



02



03



04



05

**COLLECTION**

Organic

**PATTERN TYPE**

Mural

**WIDTH**

54"/137 cm

**SCALE**

Customizable

**PRODUCT CODE**

LXD-SRD-01





# POMP

“Life” is the undeniable force that pulses from earth up through the nascent blades of Pomp. This design celebrates growth; an explosion of vibrance towards the sun that beckons it forth. An organic vertical, Pomp’s metallic ground harnesses vital forces and illuminates a space with potential.



02



03



04



05

## COLLECTION

Organic

## PATTERN TYPE

Mural

## WIDTH

54"/137 cm

## SCALE

Customizable

## PRODUCT CODE

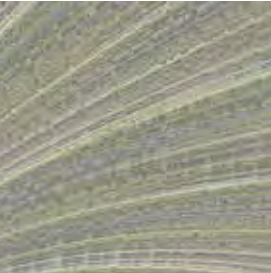
LXD-PMP-01





# CONCRETE

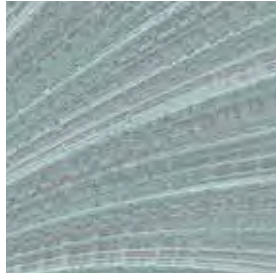
Long utilized as a foundational and structural support for buildings, cement has only recently been stripped of the secondary materials used to disguise it and its naked industrial chic celebrated. Concrete is a pattern inspired by the increasingly popular minimalist, modern look.



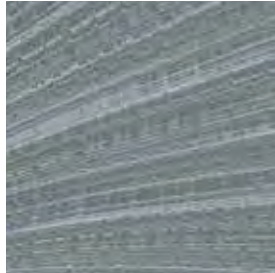
02



03



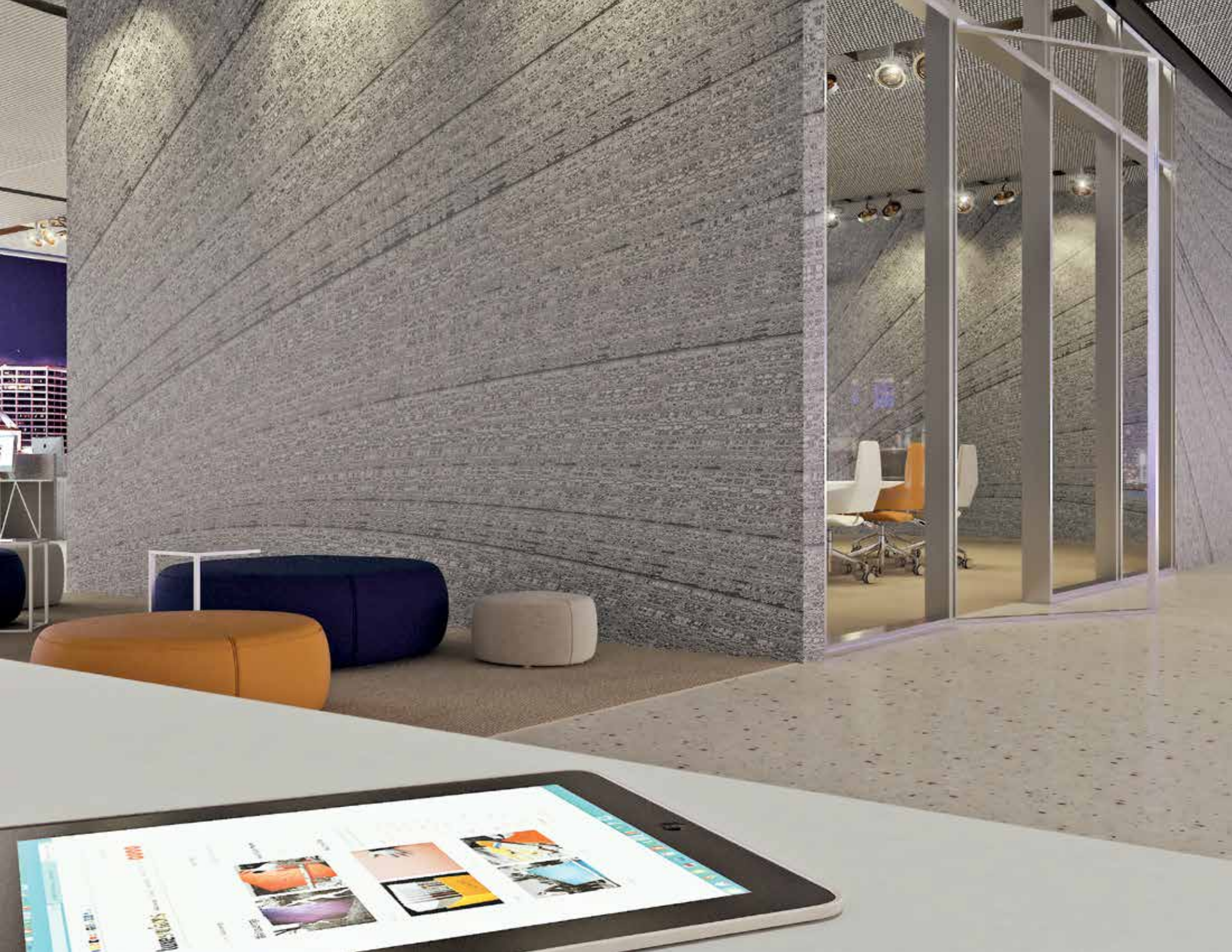
04



05

<b>COLLECTION</b>
Architectural
<b>PATTERN TYPE</b>
Mural
<b>WIDTH</b>
54"/137 cm
<b>SCALE</b>
Customizable
<b>PRODUCT CODE</b>
LXD-CRT-01

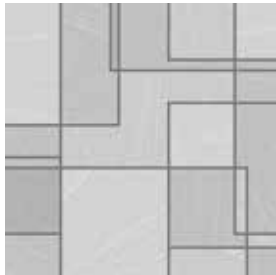
01 →





# ASHLAR

Inspired by an Incan wall in Machu Picchu, Ashlar represents precision cut stone masonry with artfully thin joints between blocks. The visible face of the stone is simultaneously rough and unhoned with smoothly polished material integrated for decorative effect. Interestingly, in some Masonic groupings, ashlar is used as a symbolic metaphor for progress. We couldn't agree more.



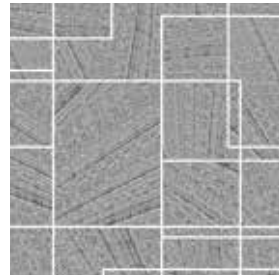
02



03



04



05

**COLLECTION**  
Architectural

**PATTERN TYPE**  
Repeat

**WIDTH**  
54"/137 cm

**SCALE**  
Customizable

**PRODUCT CODE**  
LXD-ASH-01





# PORTICO

Beveled edges and masterful craftsmanship create depth and surface intrigue. Expanse, height, and detail just out of reach—each a treasured cache depicted in Edwardian grey, Atlantic blue and statuary white. Reality collapsing into your dreams. What lies beyond? Is it this door or the next?



02



03



04

<b>COLLECTION</b>
Architectural
<b>PATTERN TYPE</b>
Mural
<b>WIDTH</b>
54"/137 cm
<b>SCALE</b>
Customizable
<b>PRODUCT CODE</b>
LXD-PRT-01

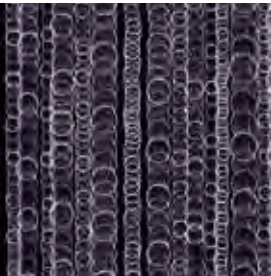
01 →





# G&T

A nod to its British East Indian inspiration, who would have thought the sacrosanct bevy of the antimalarial crowd would have a future in wall art? An homage to the fizzy combo of water, sugar, gin and soda—don't forget the lime! G & T is meant to be celebrated!



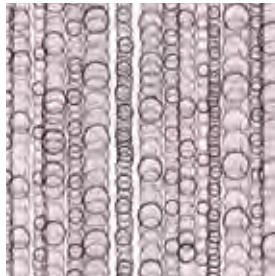
02



03



04



05

**COLLECTION**

Geometric

**PATTERN TYPE**

Repeat

**WIDTH**

54"/137 cm

**SCALE**

Customizable

**PRODUCT CODE**

LXD-GAT-01

01 →



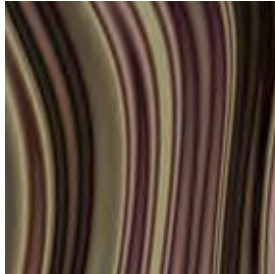


# CONTEMPO

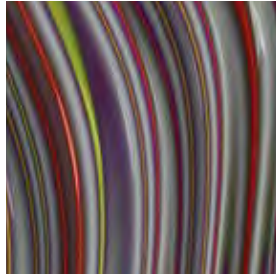
Once reserved for the civic and sacred, Patty begins a distinct narrative within the broader architectural tradition. Exploring the sensuality of polychromatic banded materials, Contempo’s striation becomes a spectacle: drawing attention through its prominence in our visual field. Our eyes are entertained by shifting patterns, combinations of colour and ocular effects. Contempo—how stripes wish they’d been born.



02



03



04

**COLLECTION**

Colour Fade

**PATTERN TYPE**

Repeat

**WIDTH**

54"/137 cm

**SCALE**

Customizable

**PRODUCT CODE**

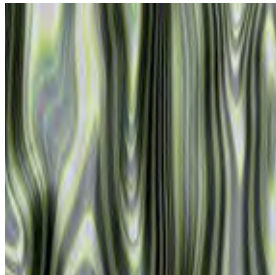
LXD-CTP-01



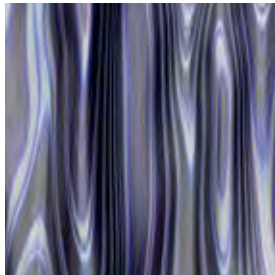


# VISCOSITY

Translating amorphous flows of digital liquid onto vertical surfaces, Viscosity was inspired by Patty's digital manipulation of water as an art form. Further inspired by a growing integration of architectural and urban thought centered around the importance of ecological balance, Viscosity, symbolizes the importance of nature-inspired influence on design.



02



03



04



05

**COLLECTION**

Organic

**PATTERN TYPE**

Mural

**WIDTH**

54"/137 cm

**SCALE**

Customizable

**PRODUCT CODE**

LXD-VSC-01



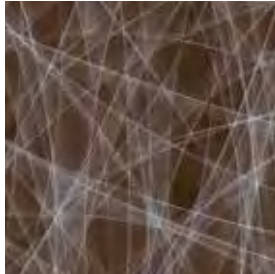


# GREYSCALE

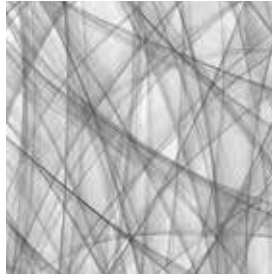
Weaving a web of filaments that appear backlit and airy, Greyscale depicts shades of this neutral varying from black at the weakest intensity to white at the strongest. The overall impact of this design is one of expanse; eyes search outward looking for an end... or is it a beginning?



02



03



04

**COLLECTION**  
Architecture

**PATTERN TYPE**  
Mural

**WIDTH**  
54"/137 cm

**SCALE**  
Customizable

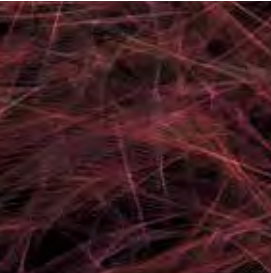
**PRODUCT CODE**  
LXD-GRS-01





# NETTING

From the Moulin Rouge, to the Jazz Age, to the highest of high fashion, fishnet has been a tool; a material enabling couture to take on many different personas. From the illicit to the celestial; a little bit naughty but a whole lot of nice—Netting is inspired by possibility. What do you want it to mean?



02



03



04



05

**COLLECTION**  
Organic

**PATTERN TYPE**  
Mural

**WIDTH**  
54"/137 cm

**SCALE**  
Customizable

**PRODUCT CODE**  
LXD-NTG-01





# CHINCOLO

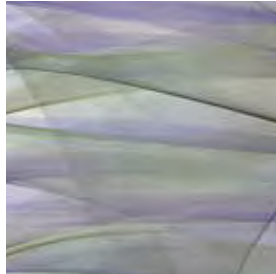
Unfurled on metallic substrate, the art of Chincolo shifts from being an object you look at to a living environment you inhabit. Moroccan fishermen casting their nets over the water’s surface. Chincolo is vertical wall sculpture. Fluid movement—the design appears to interact with wind, water, and sunlight.



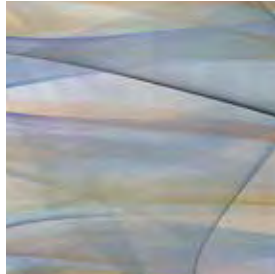
02



03

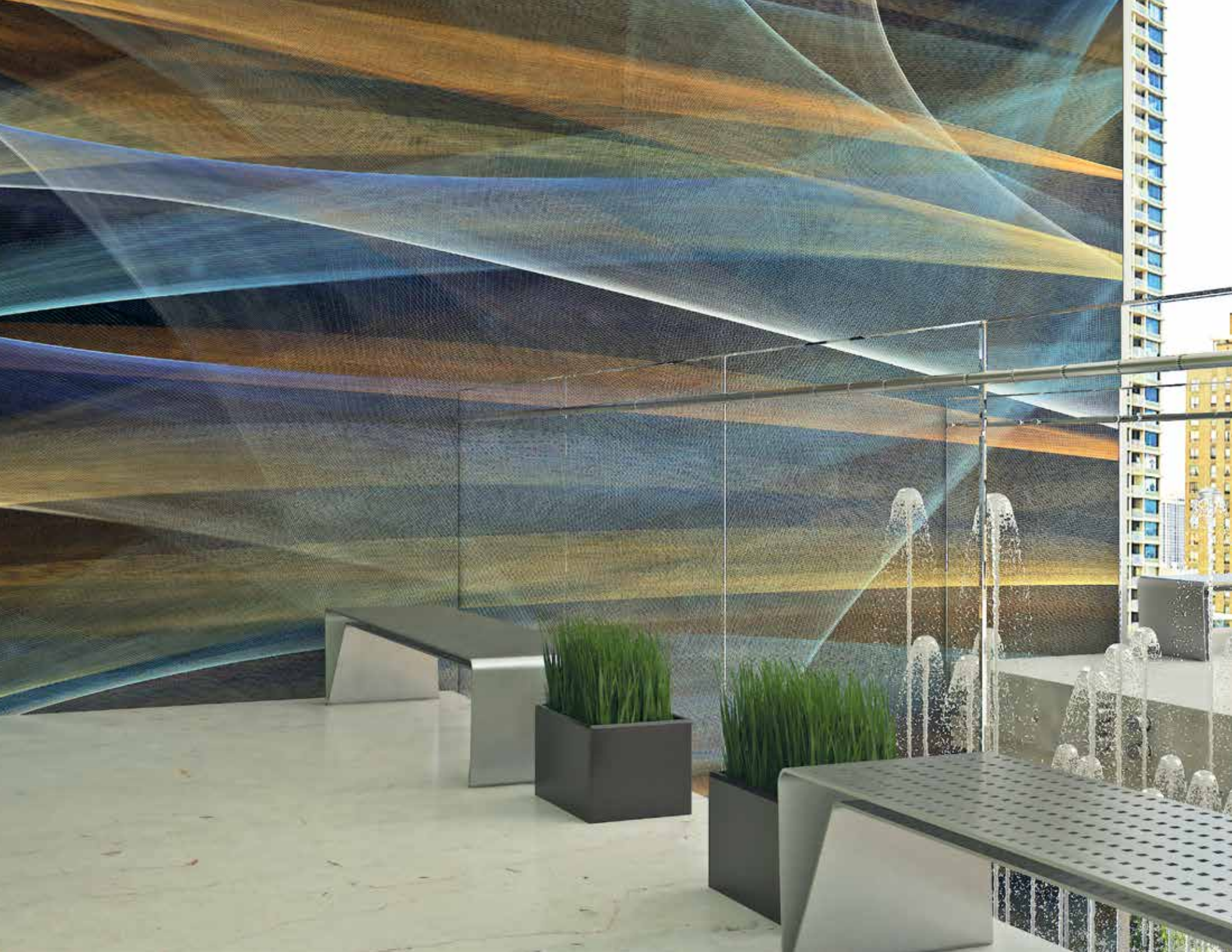


04



05

<b>COLLECTION</b>
Geometric
<b>PATTERN TYPE</b>
Mural
<b>WIDTH</b>
54"/137 cm
<b>SCALE</b>
Customizable
<b>PRODUCT CODE</b>
LXD-CHN-01





# TOOTU

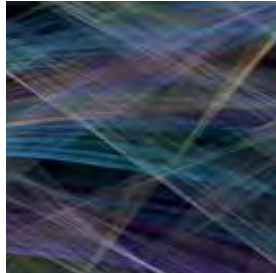
Playing on the costume name from which this design takes its inspiration, Tootu celebrates movement and life with its passion and pain. A series of intentional flash frame moments are captured in sequence as the dancer jetés across the stage; an ephemeral, morphing cloud of tulle in tow.



02



03



04

**COLLECTION**  
Geometric

**PATTERN TYPE**  
Mural

**WIDTH**  
54"/137 cm

**SCALE**  
Customizable

**PRODUCT CODE**  
LXD-TTU-01





# FLORELLA

Impressed by the oft hidden beauty of botany, Patty captures the infinitesimal details of petals and leaves and integrates their natural beauty into an exploration of negative space. Stunning minutiae make elaborate scapes when enlarged for all to discover.



02



03



04

**COLLECTION**

Organic

**PATTERN TYPE**

Mural

**WIDTH**

54"/137 cm

**SCALE**

Customizable

**PRODUCT CODE**

LXD-FLR-01





# NYMPH

Patty has magically captured the inspiration namesake behind this lyrical design. Different from other goddesses, nymphs are regarded as divine spirits who animate nature. A dance of light upon the forest floor; an enchanting serenade. Nymph: absolutely bewitching.



02



03



04

**COLLECTION**

Organic

**PATTERN TYPE**

Mural

**WIDTH**

54"/137 cm

**SCALE**

Customizable

**PRODUCT CODE**

LXD-NMP-01





# SIRENS

No better words than those of Circe's, *Odyssey*: The Sirens bewitch everybody who approaches them. There is no homecoming for the man who draws near them unawares... For with their high clear song the Sirens bewitch him...



02



03



04

**COLLECTION**

Organic

**PATTERN TYPE**

Mural

**WIDTH**

54"/137 cm

**SCALE**

Customizable

**PRODUCT CODE**

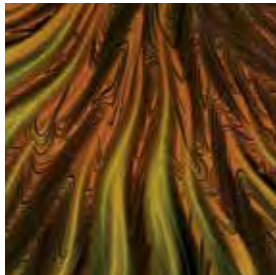
LXD-SRN-01



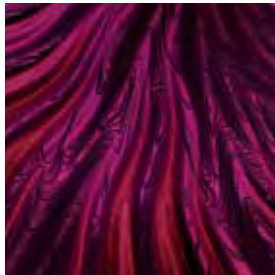


# AQUALIBRA

Cobalt, Azure, and Peacock—borrowed from the fluvial contours of Nature’s estuaries—are beautifully exhibited in this convergence of digital “aquifers.” Aqualibra celebrates the power of water with its pivotal, life-giving properties.



02



03



04



05

**COLLECTION**  
Organic

**PATTERN TYPE**  
Mural

**WIDTH**  
54”/137 cm

**SCALE**  
Customizable

**PRODUCT CODE**  
LXD-AQB-01

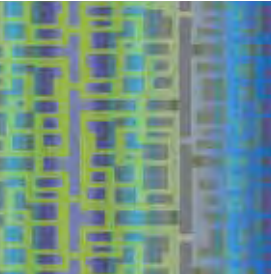
01 →





# QBRIX

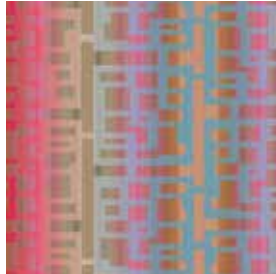
Ombred chartreuse. Turquoise and evergreen strie. These exuberant hues provide the perfect ground to “light” a luminous silver trellis. QBrix is pure electricity! Patty Madden’s exploration of geometric symmetry and cubic chemistry represents her striking artistic expanse into the magic of digital metallurgy.



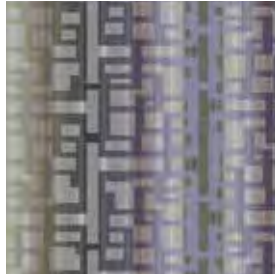
02



03



04



05

**COLLECTION**  
Colour Fade

**PATTERN TYPE**  
Repeat

**WIDTH**  
54"/137 cm

**SCALE**  
Customizable

**PRODUCT CODE**  
LXD-QBX-01

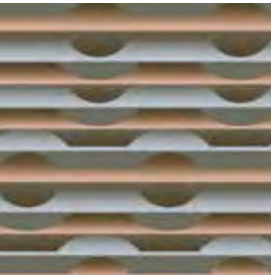
01 →



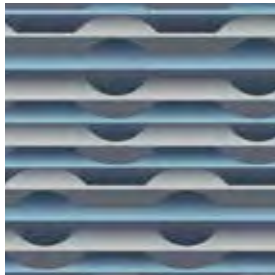


# SUBWAY

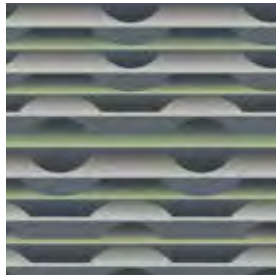
An underground network of delicious destinations geometrically represented by a horizontal system of digital “transport.” The Piccadilly, Jubilee, District, and appropriately, the Circle Lines. Connections, platforms, places to go. Subway takes you there.



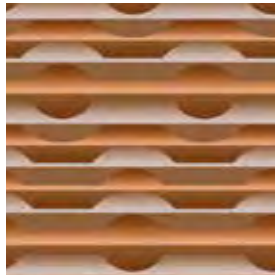
02



03



04



05

**COLLECTION**  
Geometric

**PATTERN TYPE**  
Repeat

**WIDTH**  
54"/137 cm

**SCALE**  
Customizable

**PRODUCT CODE**  
LXD-SBW-01

01 →



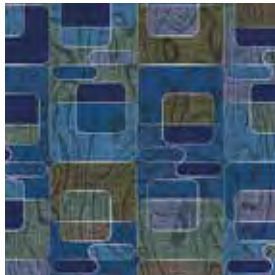


# SYNC

A nod to the mid-century modern aesthetic; a celebration of “honest” elements, Sync explores the human affinity for connection and community. Inspired by influences of the time—suburban sprawl, television, two car garages—the Sync palette tops fond memories with Baby Boomer blue, floor to ceiling grey and plywood peach; hues that inspire as much today as they did 60 years ago.



02



03



04

**COLLECTION**  
Geometric

**PATTERN TYPE**  
Repeat

**WIDTH**  
54"/137 cm

**SCALE**  
Customizable

**PRODUCT CODE**  
LXD-SYN-01

01 →



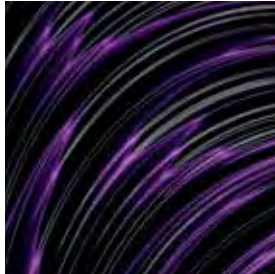


# MELT

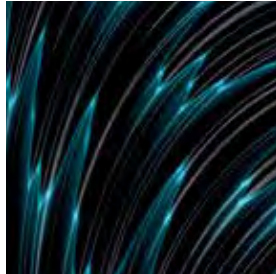
Molecules “dance” with the introduction of energy and forms morph. Solid to liquid. Though temperatures rise, Melt likes it HOT! As though freed from a fixed shape, Patty melds charred hues and glistening gold to capture the beauty of heat-induced fragments of digital viscosity.



02



03



04

**COLLECTION**

Organic

**PATTERN TYPE**

Mural

**WIDTH**

54"/137 cm

**SCALE**

Customizable

**PRODUCT CODE**

LXD-MEL-01



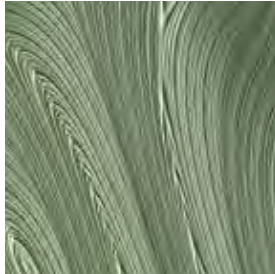


# REGENCY

A tribute to the beauty of the built environment, Regency captures the appeal of woodwork artistry with its three dimensional handcrafted detail. Enter digital magic and this design morphs its traditional inspiration into modern curvilinear appeal; elegant yet provocative.



02



03



04



05

**COLLECTION**  
Architectural

**PATTERN TYPE**  
Mural

**WIDTH**  
54"/137 cm

**SCALE**  
Customizable

**PRODUCT CODE**  
LXD-RGC-01





# PURA

Traditional Balinese architects aspire to be at harmony with the environment. The creation of Pura, or walled cities, utilized readily available resources that artisans wove into meticulous thatched walls honoring the sacred laws of building. No reed was placed without mindfulness of the balance between human, God and nature. Pura: harmonize your space.



02



03



04

**COLLECTION**

Organic

**PATTERN TYPE**

Mural

**WIDTH**

54"/137 cm

**SCALE**

Customizable

**PRODUCT CODE**

LXD-PUR-01





# ARIGATO

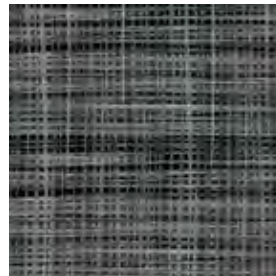
The rare 'Koi' bamboo, originating in the deep jungle of East Asian forests, inspired Arigato's "screen" of intrigue. Introduce light onto the metallic substrate and you'd swear sunshine is poking through the forest canopy of this naturalistic design. The earthy appeal of the bamboo grain is thoroughly modern and integrates beautifully with both contemporary and traditional interiors. Pure urban organic. Your walls will thank you.



02



03



04

**COLLECTION**

Organic

**PATTERN TYPE**

Repeat

**WIDTH**

54"/137 cm

**SCALE**

Customizable

**PRODUCT CODE**

LXD-ARG-01





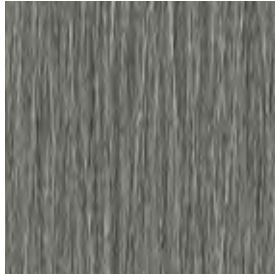
# PRAVENZO

A magical farm stay in the Italian region of Lombardy, provided the inspiration behind Pravenzo. Drawing on the natural beauty of the Po Valley lowlands—covered by shimmering waters and rice paddies—Patty captures the vertical spray of anthers, awnings and leaves. Instructed by her hostess in the art of risotto—the colors of butter, saffron and sugar—

mimic the dish’s creamy lusciousness. Normally served in Italy as a first course, we’d share the recipe with you, *ma prima*—Pravenzo!



02



03



04



05

**COLLECTION**

Organic

**PATTERN TYPE**

Repeat

**WIDTH**

54"/137 cm

**SCALE**

Customizable

**PRODUCT CODE**

LXD-PRV-01





# DALIA

Inspired by one of the brightest constellations in the southern China sky, Dalia owes its stunning appeal to the mythological bird whose celestial plumage radiates light and luminosity. Dalia creates dramatic movement. Reach up and gather the cascading stars.



02



03



04



05

**COLLECTION**

Organic

**PATTERN TYPE**

Repeat

**WIDTH**

54"/137 cm

**SCALE**

Customizable

**PRODUCT CODE**

LXD-DLA-01

01 →





# WICKLESS

The direct result of further study into the Mid-century design aesthetic of connecting the built environment with the outdoors; Wickless. Large floor to ceiling windows, simplified forms, an increase in use of natural, highly functional materials. Design was uncomplicated, fresh, seen through a bold new lens. Wickless brings that outside...in.



02



03



04



05

**COLLECTION**

Organic

**PATTERN TYPE**

Repeat

**WIDTH**

54"/137 cm

**SCALE**

Customizable

**PRODUCT CODE**

LXD-WKL-01

01 →





# USONIA

Mid-Century verbiage meaning “America,” Usonia embodies the spirit of the age. Post-war thought was optimistic. Architects and designers embraced a new aesthetic created by visionaries who believed the forward-looking style could contribute to positive social change. The emphasis was on streamlined simplicity, contemporary pattern, natural materials and a seamless flow between indoors and out.



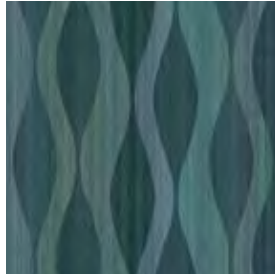
02



03



04



05

**COLLECTION**  
Colour Fade

**PATTERN TYPE**  
Repeat

**WIDTH**  
54"/137 cm

**SCALE**  
Customizable

**PRODUCT CODE**  
LXD-USO-01





# TIKI

Tiki is a progressive history of the Mid-Century aesthetic in our postmodern world. With a nod to yesteryear and its icons of simplicity, mass production, and enjoyment, Tiki represents an evolution. From post-war euphoria with its pineapple cocktails and Polynesian-influenced jazz to the Civil Rights debate and the Disco Age, there is a rich pool of

“design think” from which to pull. Embracing culture, escape and vintage cool, Patty has taken the best from each era and brought us beyond full circle.



02



03



04



05

**COLLECTION**

Colour Fade

**PATTERN TYPE**

Repeat

**WIDTH**

54"/137 cm

**SCALE**

Customizable

**PRODUCT CODE**

LXD-TKI-01





# SEAMLESS

Simple sophisticated shapes—the expanse and retraction of the tidal swell—reveal a sensual composition of movement; an interplay of elements. The gravitational force of earth, moon, and sun captured in melding hues of crimson, obsidian and opal. Seamless: rare clarity and uncomplicated beauty.



02



03



04



05

**COLLECTION**  
Colour Fade

**PATTERN TYPE**  
Repeat

**WIDTH**  
54"/137 cm

**SCALE**  
Customizable

**PRODUCT CODE**  
LXD-SML-01

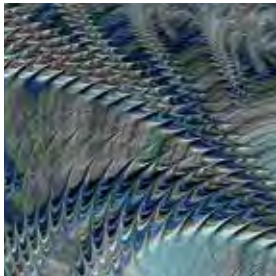
01 →





# ZEPHYR

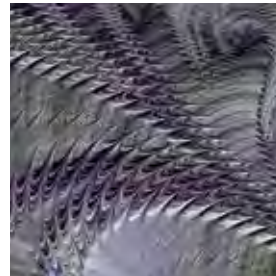
This fascinating design takes its inspiration from the highly eulogized and personified Greek god of the west wind. Patty captures what Chaucer referred as his “swete breeth,” its gentle breezes enveloping the wall with beguiling detail.



02



03



04

**COLLECTION**

Organic

**PATTERN TYPE**

Mural

**WIDTH**

54"/137 cm

**SCALE**

Customizable

**PRODUCT CODE**

LXD-ZEP-01

01 →





# SMOLDER

Ancient gypsy lore has a cure when the “smoke gets in your eyes.” To redirect the campfire haze upwards, Gypsies would throw a white rabbit by the fire and have it chased by a dog round and round. The vortex sent the plume upwards saving the vision of those huddled around the flame. Smolder is a delightful reiteration of this tale and the integration of billowy layers on metallic creates an ethereal design that is pure surface phenomenon.



02



03



04



05

**COLLECTION**

Organic

**PATTERN TYPE**

Mural

**WIDTH**

54"/137 cm

**SCALE**

Customizable

**PRODUCT CODE**

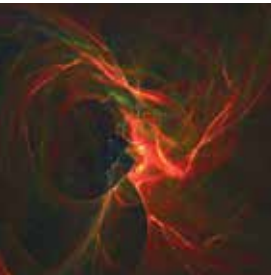
LXD-SMO-01



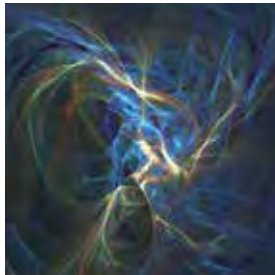


# INKA

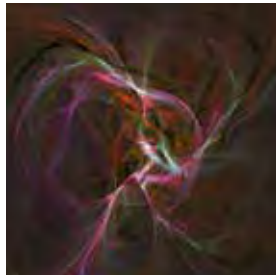
Viscous fluids provide magical alchemy in combination with metallic grounds. Diaphanous layers of color create a fusion of elements that continually reinterpret themselves with the introduction of light onto the artwork's surface.



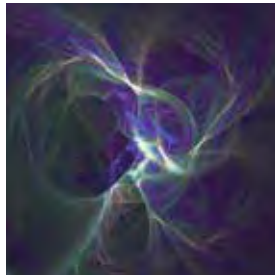
02



03



04



05

**COLLECTION**

Organic

**PATTERN TYPE**

Mural

**WIDTH**

54"/137 cm

**SCALE**

Customizable

**PRODUCT CODE**

LXD-INK-01



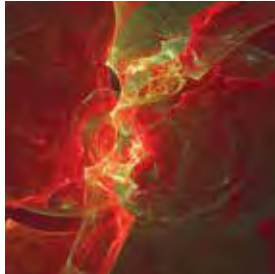


# SHATTER

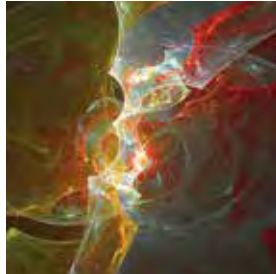
Glass is often deemed more beautiful, and perhaps even more “useful,” more evocative, in its broken state. Shard, like an antecedent self—with hurts, heartache and lessons hard learned—bears witness to a vivid, life-loved soul. Will your conceptions be shattered as well?



02



03



04



05

**COLLECTION**  
Organic

**PATTERN TYPE**  
Mural

**WIDTH**  
54"/137 cm

**SCALE**  
Customizable

**PRODUCT CODE**  
LXD-SHT-01

01 →





# BERGEN

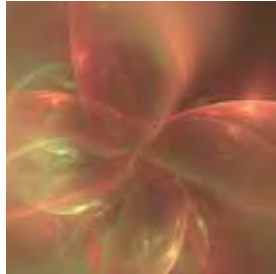
In 1840 a Norwegian fisherman from the town of Bergen was credited with the creation of a modern day treasure—glass fishing floats. Patty captures the sand etching and distinctive wear from the corrosive forces of sand, sun, and salt water in this design that celebrates the hand blown artistry. A beachcomber’s gem, Bergen will “paint” your walls with luminosity and a thousand unspoken stories.



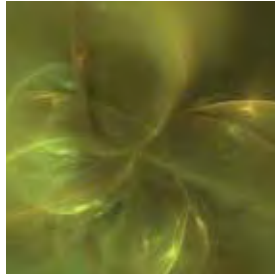
02



03



04



05

## COLLECTION

Organic

## PATTERN TYPE

Mural

## WIDTH

54"/137 cm

## SCALE

Customizable

## PRODUCT CODE

LXD-BRG-01





# PAEONIA

Impressed with ancient lore and a lover of nature and its role in well being, Patty was taken by the story of Paeon, a student of Asclepius, the Greek god of medicine and healing. Jealous of his pupil, Asclepius sought Paeon's life which was spared by Zeus who turned Paeon into the namesake flower—a mere glance at which soothes with purity and light.



02



03



04



05

<b>COLLECTION</b>
Organic
<b>PATTERN TYPE</b>
Mural
<b>WIDTH</b>
54"/137 cm
<b>SCALE</b>
Customizable
<b>PRODUCT CODE</b>
LXD-PAE-01

01 →





# BOTANICA

Replete with Caribbean influence, botanicas serve as mysterious cultural centers for those seeking healing, purpose, and community. Patty’s imagination was captured by shelves packed floor to ceiling with candles, amulets, tinctures and oils—magically restorative and designed to bring good luck, love and prosperity. Interpreting the vibrant signs and

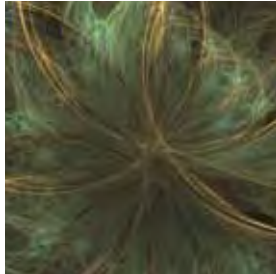
artwork that flank these urban sanctums, Botanica offers an expansive air to your walls; a similar iconic “lure” certain to attract attention and curiosity.



02



03



04



05

**COLLECTION**

Organic

**PATTERN TYPE**

Mural

**WIDTH**

54”/137 cm

**SCALE**

Customizable

**PRODUCT CODE**

LXD-BTC-01





# NEBULA

Patty interprets the birth of a star with this “interstellar” depiction of ionized gases and their magical fluorescence—each imploding beneath their weight. Combined with its metallic substrate, Nebula throws off radiance and luminosity, capturing, at first glance, a galactic mystery that was light years in the making.



02



03



04

**COLLECTION**

Organic

**PATTERN TYPE**

Mural

**WIDTH**

54"/137 cm

**SCALE**

Customizable

**PRODUCT CODE**

LXD-NEB-01

01 →

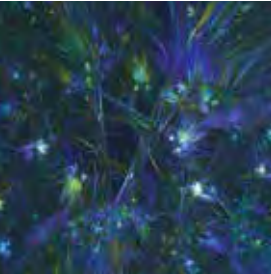




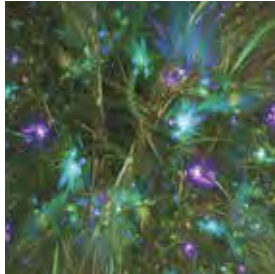
# EDELWEISS

Intrigued by local Swiss lore and alpinist feat, Patty depicts the field flower representative of betrothal. To bequeath such a bloom was sign of certain daring and devotion. Growing on some of the most inaccessible cliffs of the Tyrolese mountains, the beauty of the rare flower brought many love bound hunters respect and admiration from their mountain maiden.

While the design’s morphology speaks to its Latin name, “Lion’s paw,” it is a sentiment of noble purity responsible for the designs vertical ethos.



02



03



04



05

**COLLECTION**

Organic

**PATTERN TYPE**

Mural

**WIDTH**

54"/137 cm

**SCALE**

Customizable

**PRODUCT CODE**

LXD-EDL-01



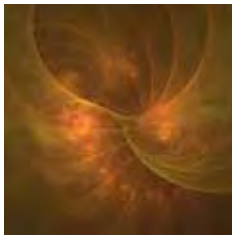








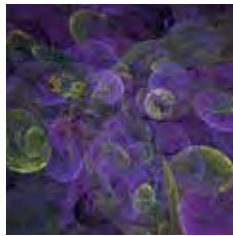
Spherus / 10



Jadeite / 12



Solace / 14



Archipelago / 16



Sabatini / 18



Nest / 20



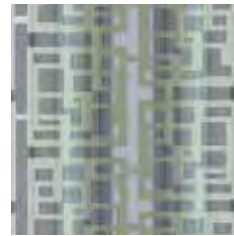
Sephoris / 22



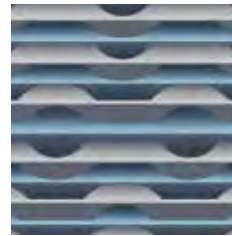
Sirens / 66



Aqualibra / 68



Qbrix / 70



Subway / 72



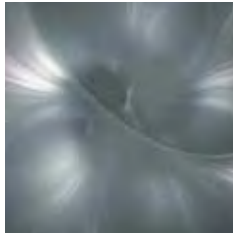
Sync / 74



Melt / 76



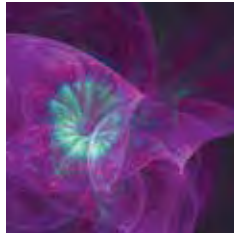
Regency / 78



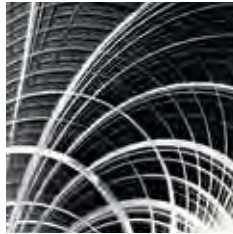
Volo / 24



Marble / 26



Chitano / 28



Metropolitan / 30



Fenestra / 32



Lumen / 34



Liaison / 36



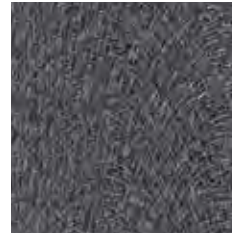
Pura / 80



Arigato / 82



Pravenzo / 84



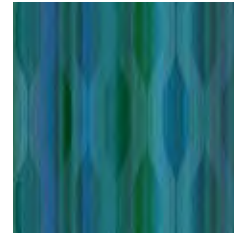
Dalia / 86



Wickless / 88



Usonia / 90



Tiki / 92



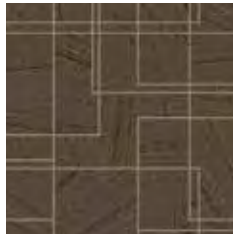
Shard / 38



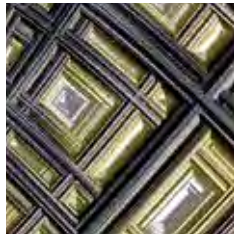
Pomp / 40



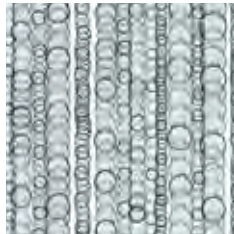
Concrete / 42



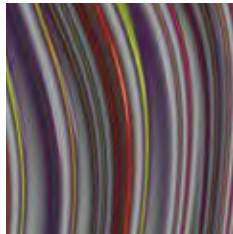
Ashlar / 44



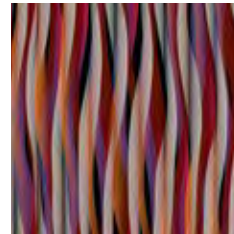
Portico / 46



G&T / 48



Contempo / 50



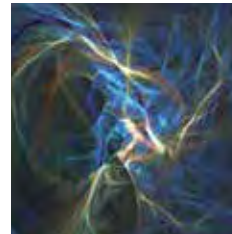
Seamless / 94



Zephyr / 96



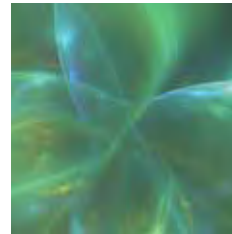
Smolder / 98



Inka / 100



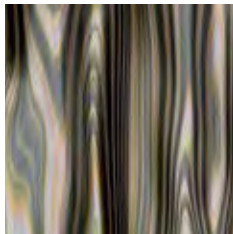
Shatter / 102



Bergen / 104



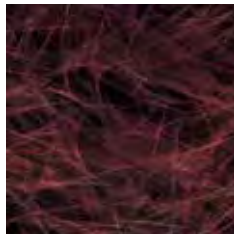
Paeonia / 106



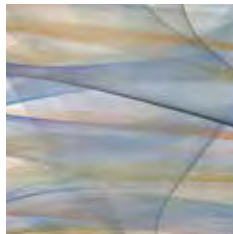
Viscosity / 52



Greyscale / 54



Netting / 56



Chincolo / 58



Tootu / 60



Florella / 62



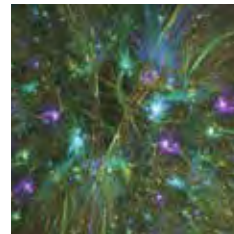
Nymph / 64



Botanica / 108

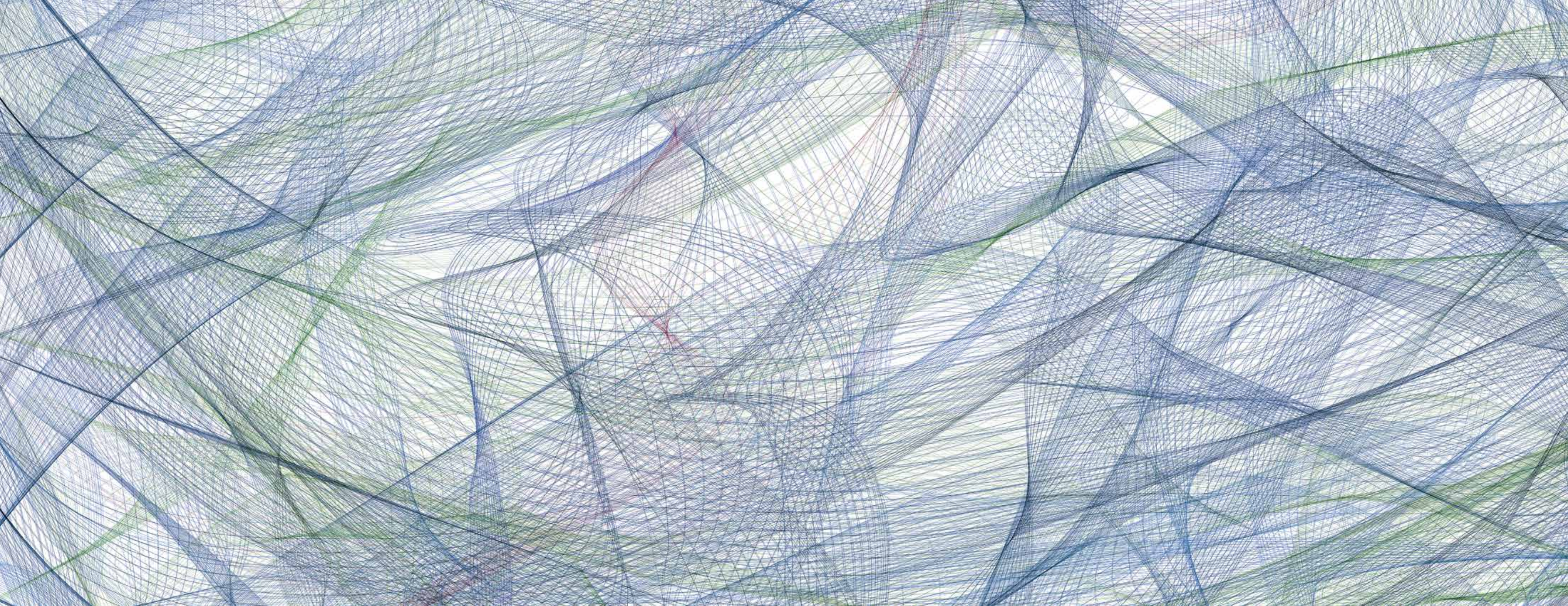


Nebula / 110



Edelweiss / 112







# ABOUT LUXE SURFACES

As a leading premium wallcovering company, Luxe Surfaces' commitment is steadfast and our strategy, simple: surround ourselves with dedicated associates committed to a principle of world class service and continually push ourselves to think critically about every aspect of the products we brand.

The result? Luxe Surfaces offers the most inspired wallcovering design portfolio available to the market today.

Combining proprietary fabrication techniques of the highest quality with some of the finest manufacturers in North America proved a winning combination. Luxe Surfaces distributes our distinctive product beyond US shores to over 20 countries in the global market. Our commitment to innovation is the impetus behind Luxe Surfaces' evolution from gravure product to our latest introduction of digital wallcovering and handmade art for walls.

With the interior design world continually flooded with new things, ideas and images, Luxe Surfaces delivers wallcovering with staying power. Our commitment to evolution means groundbreaking product development that establishes new standards for vertical surfaces.

Luxe Surfaces—Expanding our expectations so we can exceed yours.

Copyright © 2016 Luxe Surfaces Inc.

Copyright © 2016 Patty Madden Inc.

All rights reserved. In accordance with the U.S. Copyright Act of 1976, the scanning, uploading, and electronic sharing of any part of this book without the permission of the publisher is unlawful piracy and theft of the author's intellectual property. If you would like to use material from the book (other than for review purposes), prior written permission must be obtained by contacting the publisher at [info@luxesurfaces.com](mailto:info@luxesurfaces.com). Thank you for your support of the author's rights.

**Luxe Surfaces**

10028 Maumelle Blvd.

North Little Rock, AR 72113

Tel: (501) 753-1267

[luxesurfaces.com](http://luxesurfaces.com)

First Edition June 2016

10 9 8 7 6 5 4 3 2 1

Text by Marie Leon

Interior Design and Renderings by e-Render

Book design by Empire Design Studio

Printed by Maar Printing Service, NY

Manufactured in the United States

**luxe surfaces**