

accessories

Starter Kit



8oz. spray bottle of liquid cleaner, 2 erasers,
2 sets of 4 dry erase markers
[Product Code: WWSK](#)

Eraser



The WriteWalls Magic Eraser
[Product Code: WWE-001](#)

tray

Aluminum Marker Tray

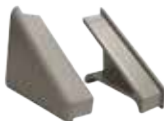


Install WriteWalls marker tray along the bottom of your dry erase surface as easy-access housing for dry erase marker, eraser and cloths. Aluminum marker trays are available in clear satin anodized aluminum.

[Product code: WWAMT](#)

end caps

Plastic end caps for
aluminum marker tray



Flat-faced plastic end cap pairs are available to complete marker tray edges.

[Product code: WWPEC](#)

trim

Snap-On Trim



WriteWalls Snap-On Trim provides a clean professional finish, is easy to install and can be added to any dry erase surface either immediately after installation, or as an after thought. Vertical and horizontal pieces come together at a pre-cut mitered edge. This trim has a 1 3/4" profile. Snap-On Trims are available in clear satin anodized aluminum.

[Product code: WWSOT](#)

J-CAP Trim for
wallcovering



WriteWalls J-CAP Trim installs seamlessly with the WriteWalls vinyl dry erase surfaces. This finishing option is ideal when a low profile is preferred. This trim is for 1/16" material. J-CAP Trims are available in clear satin anodized aluminum.

[Product code: WWJCP-V](#)

J-CAP Trim for film



WriteWalls J-CAP Trim installs seamlessly with the WriteWalls film dry erase surfaces. This finishing option is ideal when a low profile is preferred. This trim is for 3/32" material. J-CAP Trims are available in clear satin anodized aluminum.

[Product code: WWJCP-F](#)

J-Trim for TackNow



J-Trim for TackNow will finish all edges of your TackNow as necessary. This trim is for 1/4" material. J-Trims are available in clear satin anodized aluminum.

[Product code: WWJTRIM](#)

H-Trim for TackNow



H-Trim for TackNow will join two strips of TackNow as necessary. This trim is for 1/4" material. H-Trims are available in clear satin anodized aluminum.

[Product code: WWHTRIM](#)

Inside & Outside Trim
for TackNow



Inside and outside corner trim will join two strips of TackNow at any 90 degree corner. This double duty item is the same versatile piece for either inside or outside corners. Used with 1/4" material. Inside and outside corner trims are available in clear satin anodized aluminum.

[Product code: WWIOTRIM](#)