



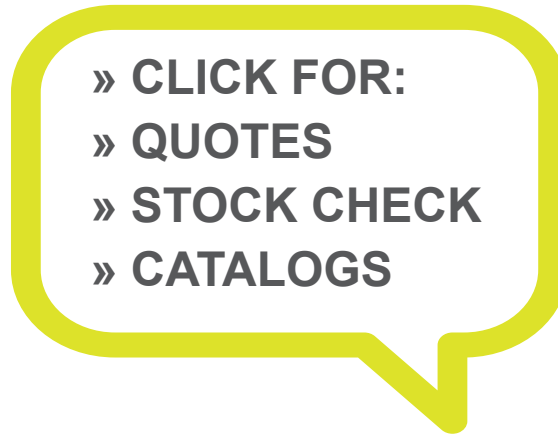
Click for CD2-CAL-11



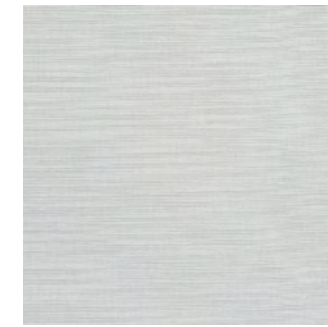
Click for CD2-CAL-12



Click for CD2-CAL-23



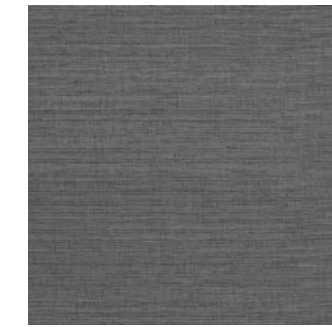
Click for CD2-CAL-25



Click for CD2-CAL-26



Click for CD2-CAL-27



Click for CD2-CAL-28



Click for CD2-CAL-29



Made in the U.S.A.

Click for All Colors

Weight: Type II 20 oz | Width: 52/54" | Backing: Non-Woven | Match: Random Non-Reversible | Repeat: 52" H x 18 V"
Fire Rating: Class A | NSF/ANSI 342 Certified for Sustainability | Passes NFPA 286 Corner Burn Test | Top Coat: Aqua Clear Available



Click for CD2-CAL-32



Click for CD2-CAL-40



Click for CD2-CAL-41



Click for CD2-CAL-42



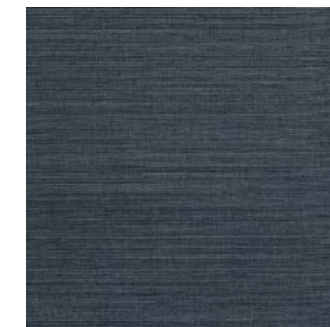
Click for CD2-CAL-43



Click for CD2-CAL-44



Click for CD2-CAL-45



Click for CD2-CAL-46



Click for CD2-CAL-47



Click for CD2-CAL-48



Click for CD2-CAL-50



Click for CD2-CAL-51



Click for CD2-CAL-52



Click for all solutions