

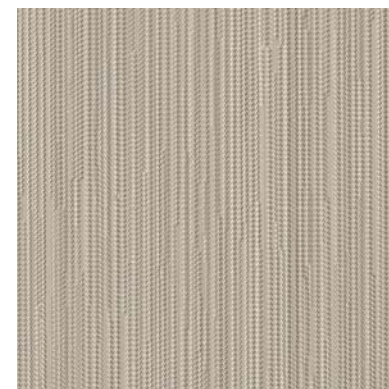
Click for LXB-CHA-01



Click for LXB-CHA-02



Click for LXB-CHA-03



Click for LXB-CHA-04



Click for LXB-CHA-05



Click for LXB-CHA-06



Click for LXB-CHA-07

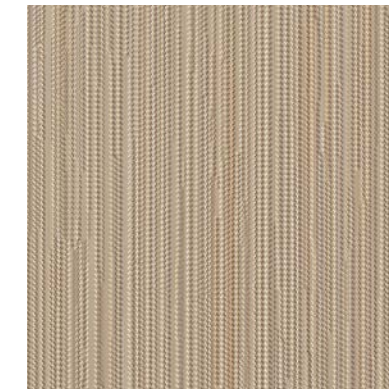


Chainite

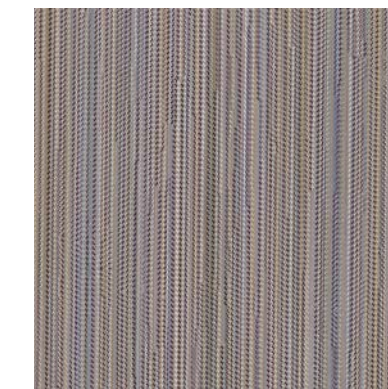
PATTY MADDEN  
WALLCOVERING



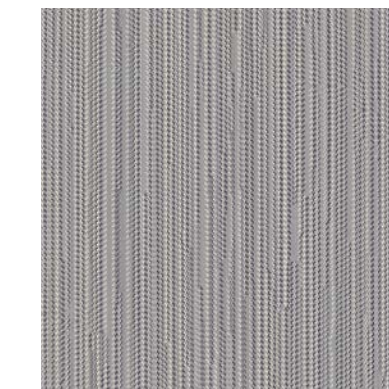
Click for LXB-CHA-08



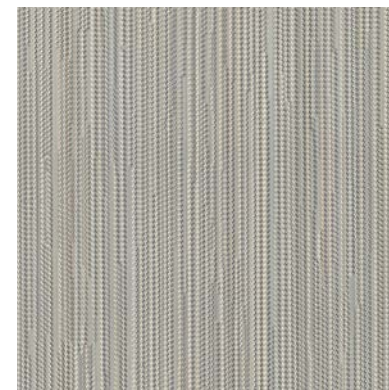
Click for LXB-CHA-09



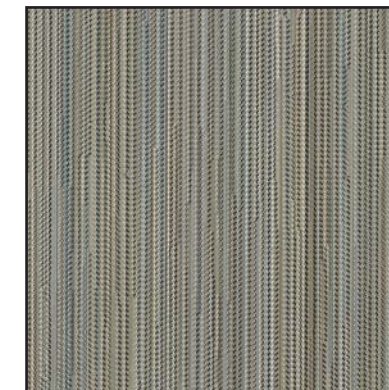
Click for LXB-CHA-10



Click for LXB-CHA-11



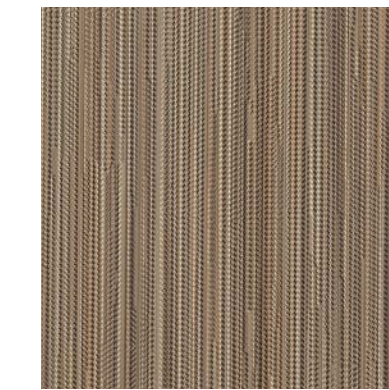
Click for LXB-CHA-12



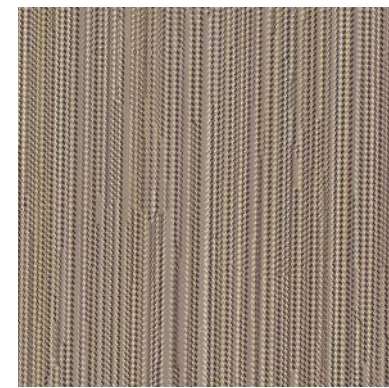
Click for LXB-CHA-13



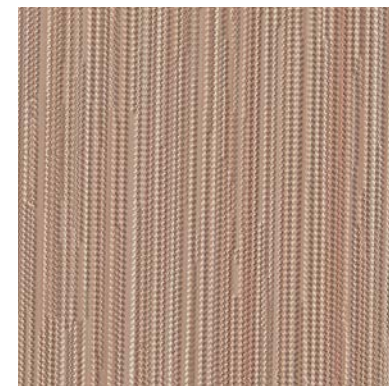
Click for LXB-CHA-14



Click for LXB-CHA-15



Click for LXB-CHA-16



Click for LXB-CHA-17



Click to be Social



Click for all Solutions

Made in the U.S.A.

Click for All Colors

Weight: Type II 20 oz | Width: 52/54" | Backing: Osaburg | Match: Random Reversible | Warranty: 5 Year | Fire Rating: Class A | Low Emitting Passes Cal 01350 Standard (LEED EQ 4.2) | Passes NFPA 286 Corner Burn Test