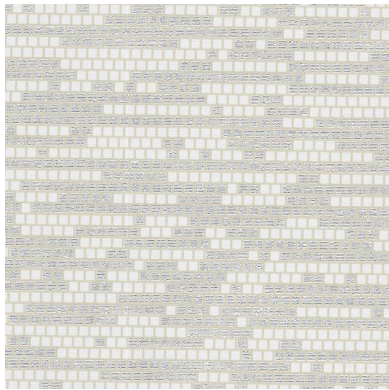
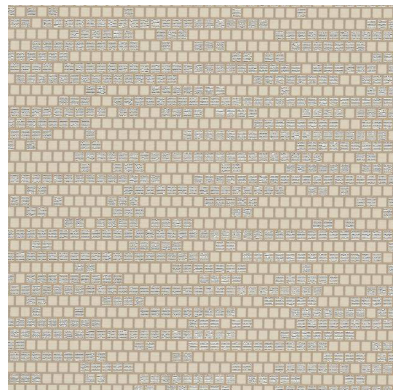


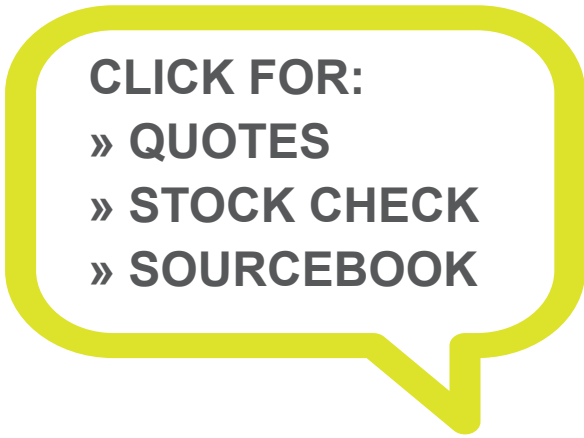
Click for CSD-PXL-01



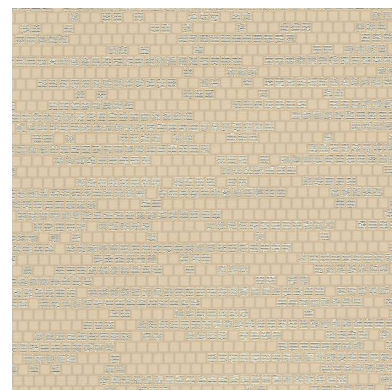
Click for CSD-PXL-02



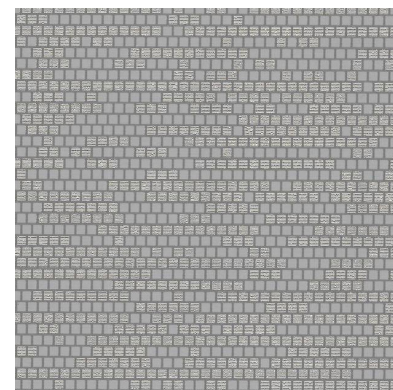
Click for CSD-PXL-03



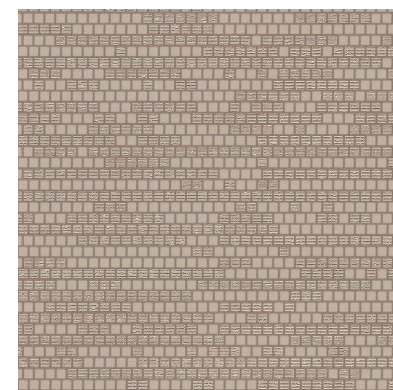
CLICK FOR:
» QUOTES
» STOCK CHECK
» SOURCEBOOK



Click for CSD-PXL-04



Click for CSD-PXL-05



Click for CSD-PXL-06



Click for Crosslinker Topcoat



PIXEL

CREATE
WALLCOVERING

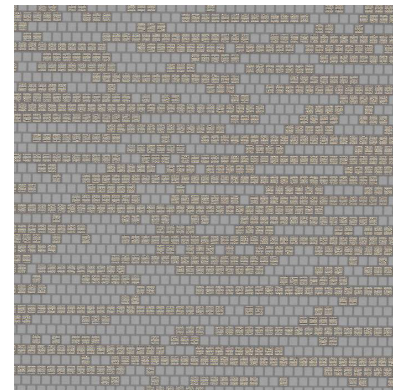
Made in the U.S.A.

Click for All Colors

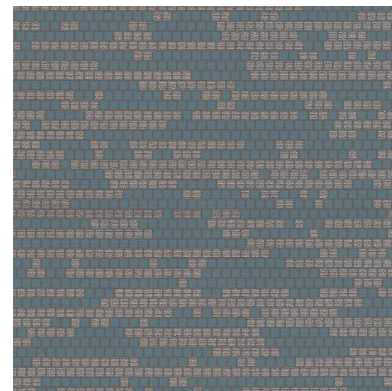
Weight: Type II 20 oz | Width: 54" | Backing: Non-Woven | Match: Reverse Random Match | Antimicrobial | Warranty: 5 Year
Fire Safety: Class A | Tested in Accordance with ASTM E-84 Tunnel Test | Flame Spread 10 | Custom Colors | Heavy Metals Free



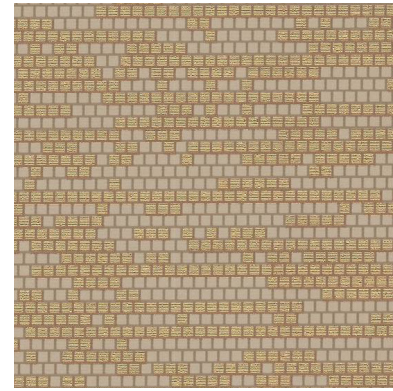
Click for CSD-PXL-07



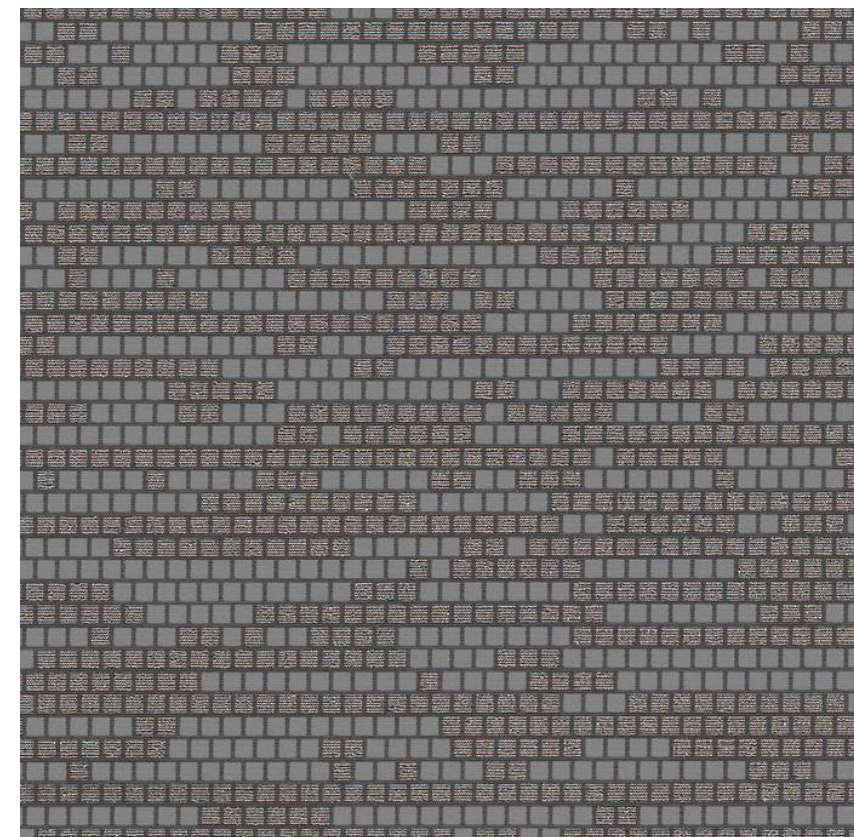
Click for CSD-PXL-08



Click for CSD-PXL-09



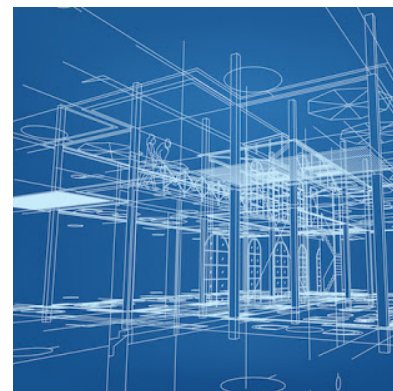
Click for CSD-PXL-10



Click for CSD-PXL-11



Click for CSD-PXL-12



Click for Full Product Specs



Click to be Social



Click for all Solutions