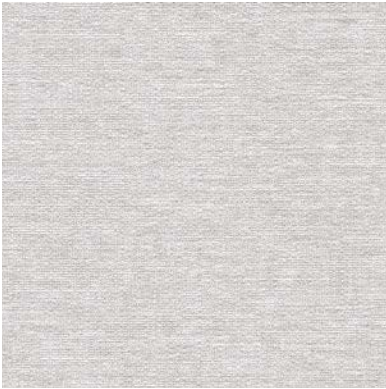
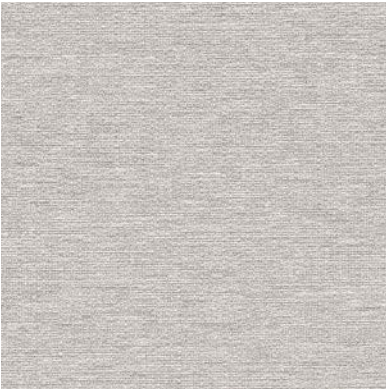


Click for CM133-2599



Click for CM133-2600

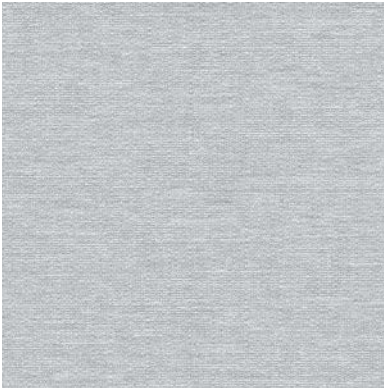


Click for CM133-2601

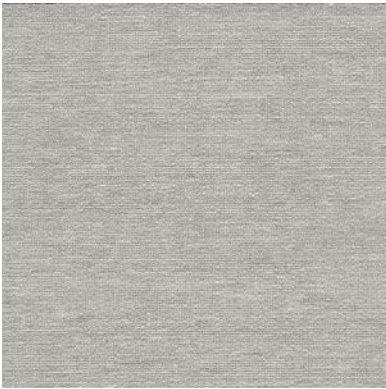
» **CLICK FOR:**
» **QUOTES**
» **STOCK CHECK**
» **SOURCEBOOK**



Click for CM133-2602



Click for CM133-2603



Click for CM133-2604



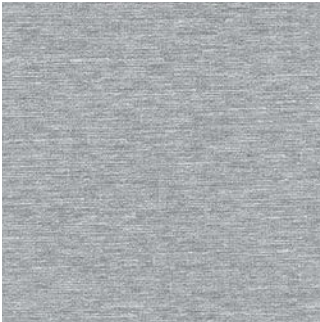
Click for CM133-2605



Aperture Texture



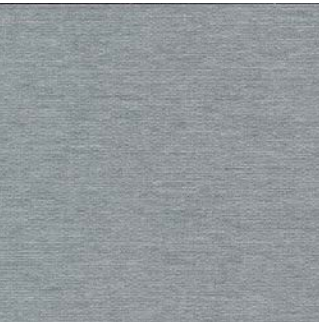
Click for CM133-2606



Click for CM133-2607



Click for CM133-2608



Click for CM133-2609



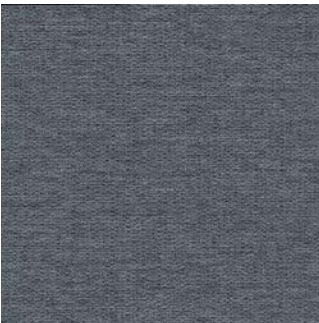
Click for CM133-2610



Click for CM133-2611



Click for CM133-2612



Click for CM133-2613



Click for CM133-2614



Click for CM133-2615



Click for CM133-2616



Click for Full Product Specs



Click to be Social



Click for all Solutions

Made in the U.S.A.

Click for All Colors

| Weight: Type II 20 oz | Width: 52/54” | Backing: Osnaburg| Match: Random | CCC-T-191A CE Declaration of Conformity |
| Fire Rating: Class A | Passes Class A NFPA 101 Life Safety Code | Passes NFPA 286 Corner Burn Test | Anti-microbial Top Coat Available |