



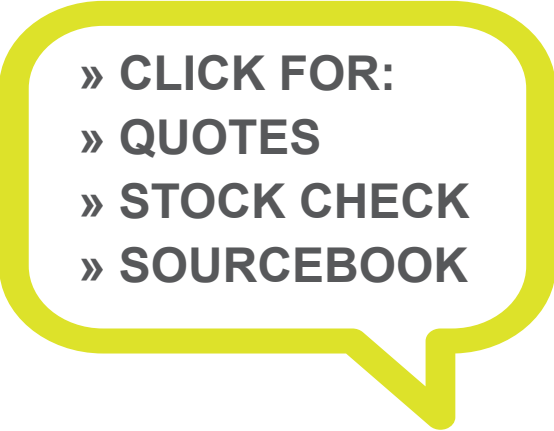
[Click for CM136-2643](#)



[Click for CM136-2644](#)



[Click for CM136-2645](#)



[Click for CM136-2646](#)



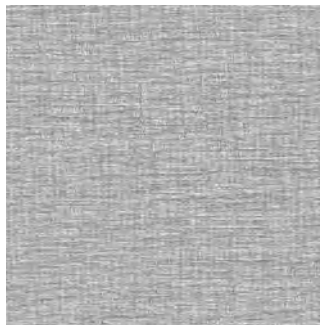
[Click for CM136-2647](#)



[Click for CM136-2648](#)



[Click for CM136-2649](#)



[Click for CM136-2650](#)



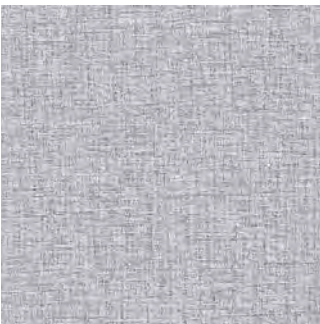
Made in the U.S.A.

[Click for All Colors](#)

Weight: Type II 20 oz | Width: 52/54” | Backing: Osnaburg | Match: Random Reversible | CCC-T-191A CE Declaration of Conformity
Fire Rating: Class A | Passes Class A NFPA 101 Life Safety Code | Passes NFPA 286 Corner Burn Test | Anti-microbial Top Coat Available



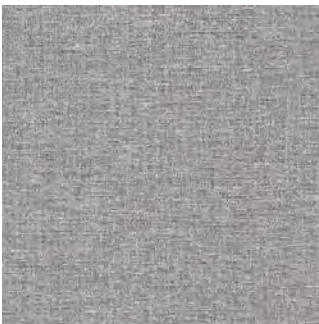
[Click for CM136-2651](#)



[Click for CM136-2652](#)



[Click for CM136-2653](#)



[Click for CM136-2654](#)



[Click for CM136-2655](#)



[Click for CM136-2656](#)



[Click for CM136-2657](#)



[Click for CM136-2658](#)



[Click for CM136-2659](#)



[Click for CM136-2660](#)



[Click for CM136-2661](#)



[Click for Full Product Specs](#)



[Click to be Social](#)



[Click for all Solutions](#)