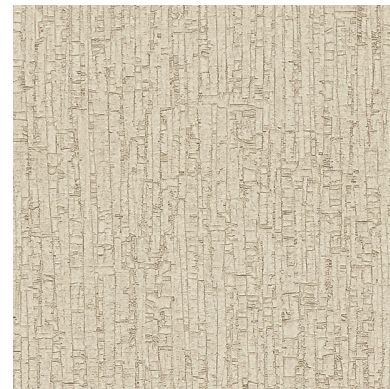




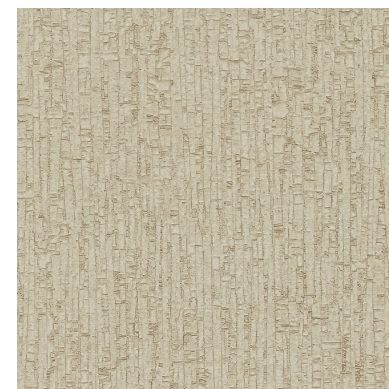
Click for DN2-COR-01



Click for DN2-COR-02



Click for DN2-COR-03



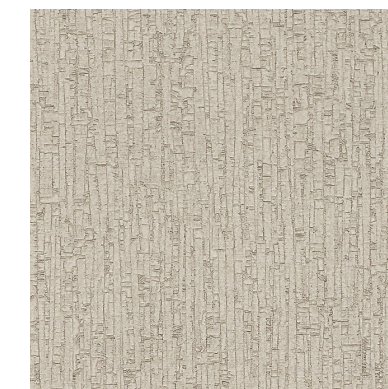
Click for DN2-COR-04



Click for DN2-COR-05



Click for DN2-COR-06



Click for DN2-COR-07



Corcho

de novo WALL  
denovowall.com



Click for DN2-COR-08



Click for DN2-COR-09



Click for DN2-COR-10



Click for DN2-COR-11



Click for DN2-COR-12



Click for DN2-COR-13



Click for DN2-COR-14



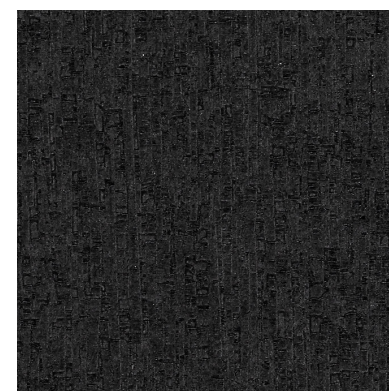
Click for DN2-COR-15



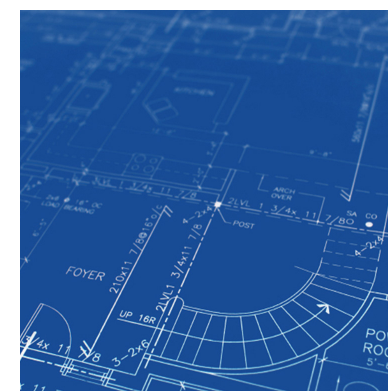
Click for DN2-COR-16



Click for DN2-COR-17



Click for DN2-COR-18



Click for Full Product Specs



Click to be Social



Click for all Solutions

Made in the U.S.A.

Click for All Colors

Weight: Type II 20 oz | Width: 54" | Backing: Osnaburg | Match: Random Reversible | Repeat 36" Horizontal / 11.8" Vertical  
Fire Rating: Class A | Passes Class A NFPA 101 Life Safety Code | Passes NFPA 286 Corner Burn Test