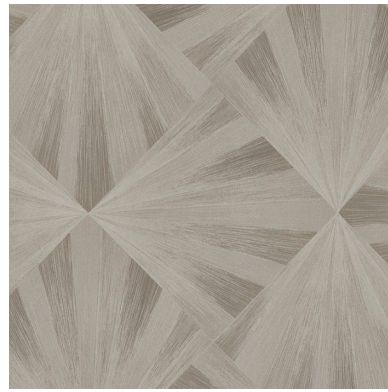
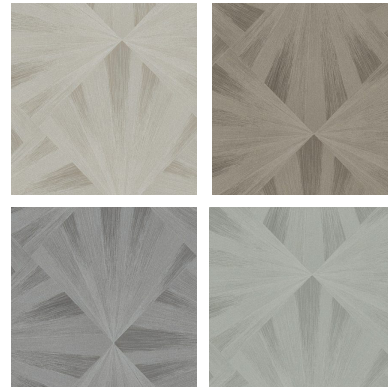




Click for CD2-EST-01

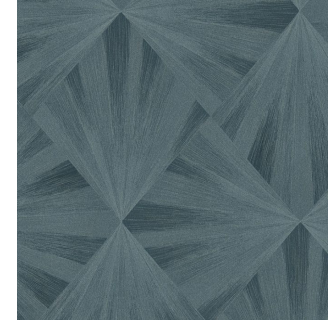


Click for CD2-EST-02

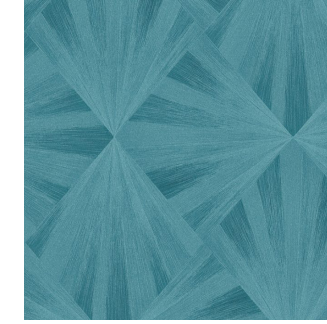


Click for CD2-EST-03-06

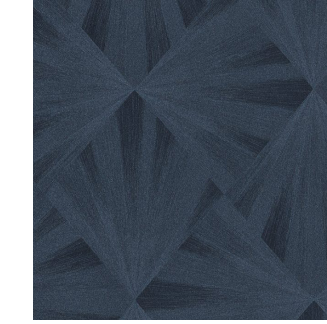
» **CLICK FOR:**
 » **QUOTES**
 » **STOCK CHECK**
 » **SOURCEBOOK**



Click for CD2-EST-07



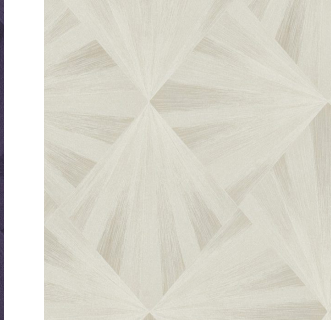
Click for CD2-EST-08



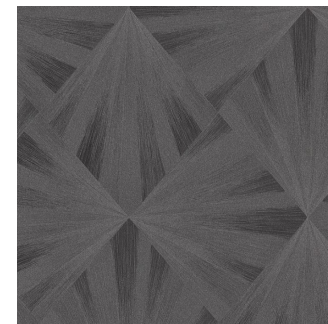
Click for CD2-EST-09



Click for CD2-EST-10



Click for CD2-EST-11



Click for CD2-EST-12



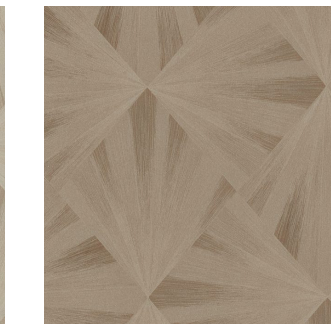
Click for CD2-EST-13



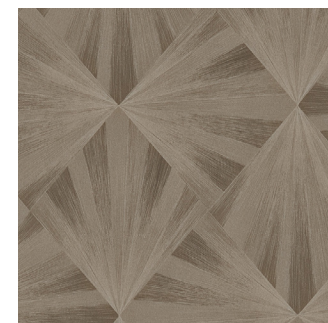
Click for CD2-EST-14



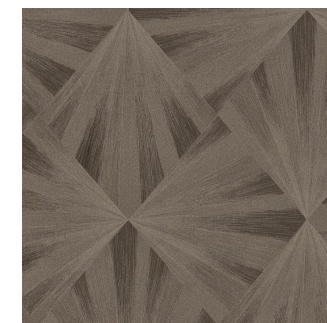
Click for CD2-EST-15



Click for CD2-EST-16



Click for CD2-EST-17



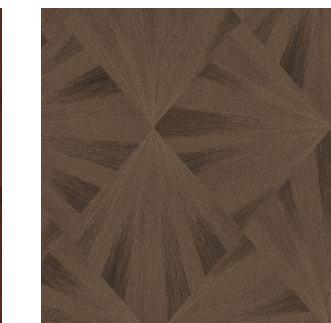
Click for CD2-EST-18



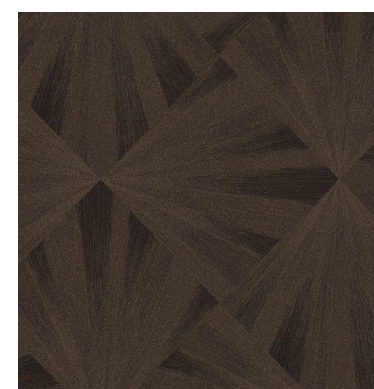
Click for CD2-EST-19



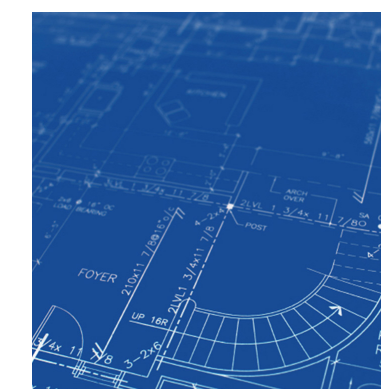
Click for CD2-EST-20



Click for CD2-EST-21



Click for CD2-EST-22



Click for Full Product Specs



Click to be Social



Click for all Solutions

Made in the U.S.A.

Click for All Colors

Weight: Type II 32 oz | Width: 53" | Backing: Osaburg | Match: Straight Across Match | Warranty: 5 Year |
 | Fire Rating: Class A | Passes W-101 Quality Standard for Polymer Coated Fabric Wallcovering | Passes NFPA 286 Corner Burn Test |