



Click for CD2-ILI-01



Click for CD2-ILI-02



Click for CD2-ILI-03

» **CLICK FOR:**  
 » **QUOTES**  
 » **STOCK CHECK**  
 » **SOURCEBOOK**



Click for CD2-ILI-04



Click for CD2-ILI-05



Click for CD2-ILI-06



Click for CD2-ILI-07

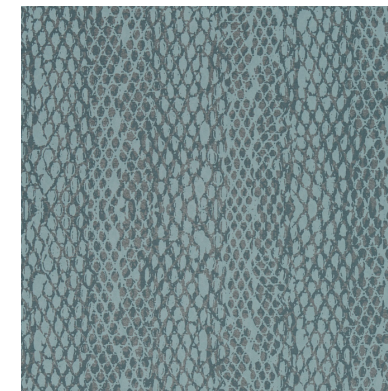


de  
 nōvō<sup>®</sup>  
 WALL

lili



Click for CD2-ILI-08



Click for CD2-ILI-09



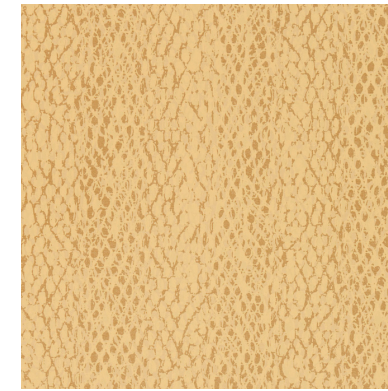
Click for CD2-ILI-10



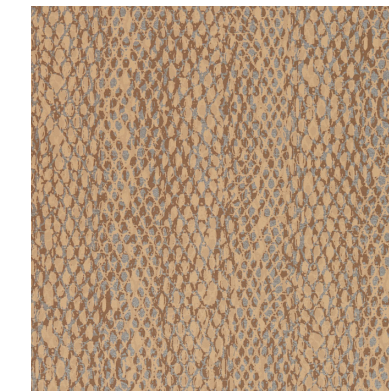
Click for CD2-ILI-11



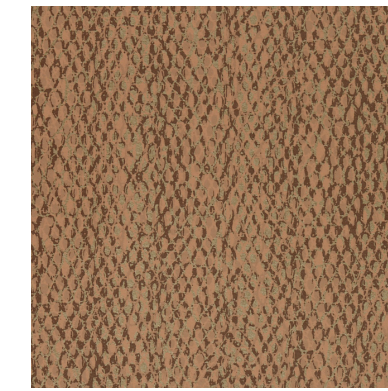
Click for CD2-ILI-12



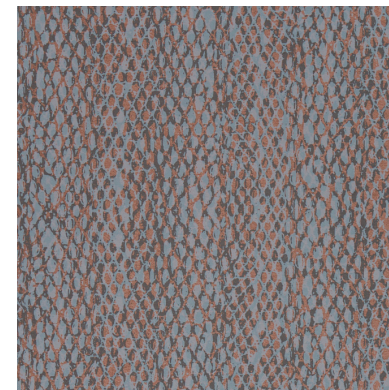
Click for CD2-ILI-13



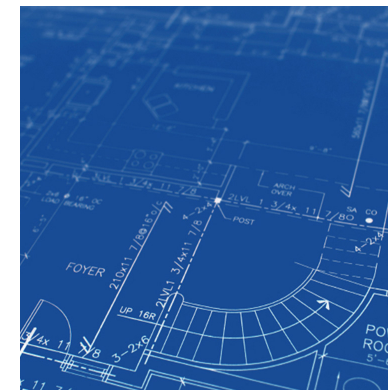
Click for CD2-ILI-14



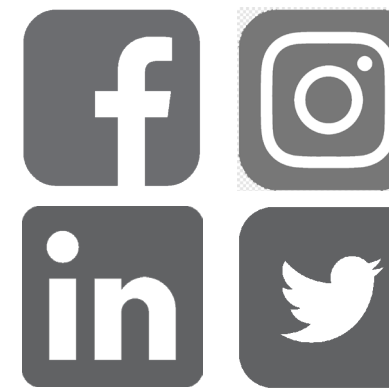
Click for CD2-ILI-15



Click for CD2-ILI-16



Click for Full Product Specs



Click to be Social



Click for all Solutions

Made in the U.S.A.

Click for All Colors

Weight: Type II 20 oz | Width: 54" | Backing: Osaburg | Match: Reversible Straight Match | Repeat V 24" x H 53" | Warranty: 5 Year  
 Fire Rating: Class A | Passes Class A NFPA 101 Life Safety Code | Passes NFPA 286 Corner Burn Test | Custom Colors & Weight Available