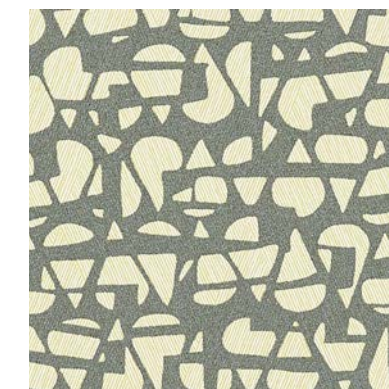




» **CLICK FOR:**  
 » **QUOTES**  
 » **STOCK CHECK**  
 » **SOURCEBOOK**



Click for CD2-LOB-01

Click for CD2-LOB-02

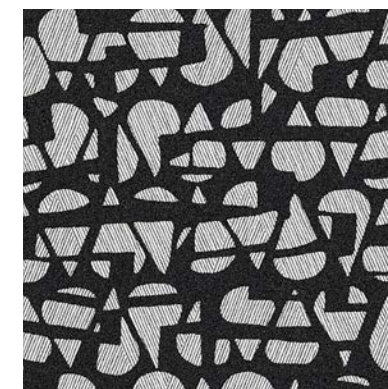
Click for CD2-LOB-03

Click for CD2-LOB-04

Click for CD2-LOB-05

Click for CD2-LOB-06

Click for CD2-LOB-07



Click for CD2-LOB-08

Click for CD2-LOB-09

Click for CD2-LOB-10

Click for CD2-LOB-11



Click for CD2-LOB-12

Click for CD2-LOB-13

Click for CD2-LOB-14

Click for CD2-LOB-15



Click for CD2-LOB-16

Click for Full Product Specs



Click to be Social



Click for all Solutions

Made in the U.S.A.

Click for All Colors

Weight: Type II 20 oz | Width: 54" | Backing: Osnaburg | Match: Random Reversible | Repeat V 24" x H 52" | Top Coat: Aqua Clear |  
 Fire Rating: Class A | Passes Class A NFPA 101 Life Safety Code | Passes NFPA 286 Corner Burn Test |