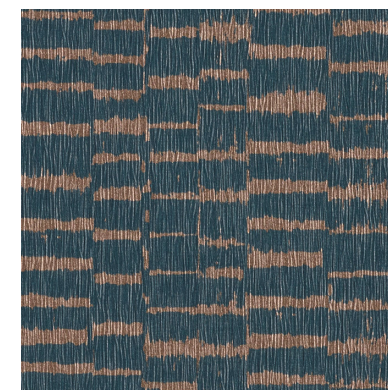
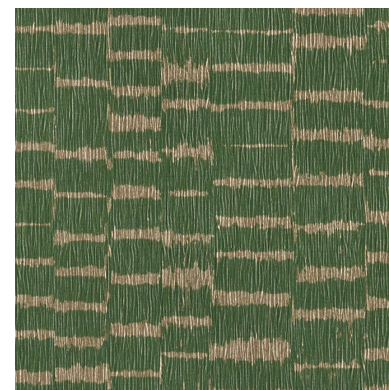




» **CLICK FOR:**
 » **QUOTES**
 » **STOCK CHECK**
 » **SOURCEBOOK**



Click for CD2-NOU-01

Click for CD2-NOU-02

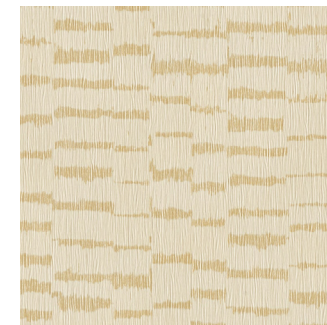
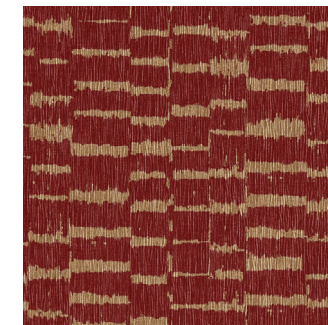
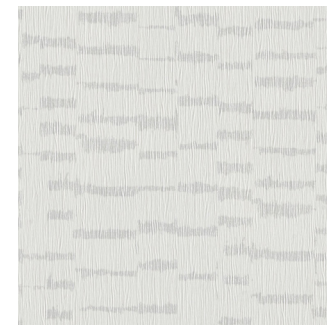
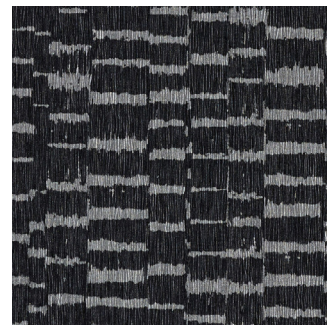
Click for CD2-NOU-03

Click for CD2-NOU-04

Click for CD2-NOU-05

Click for CD2-NOU-06

Click for CD2-NOU-07



Click for CD2-NOU-08

Click for CD2-NOU-09

Click for CD2-NOU-10

Click for CD2-NOU-11

Click for CD2-NOU-12



Click for CD2-NOU-13

Click for CD2-NOU-14

Click for CD2-NOU-15

Click for CD2-NOU-16

Click for CD2-NOU-17

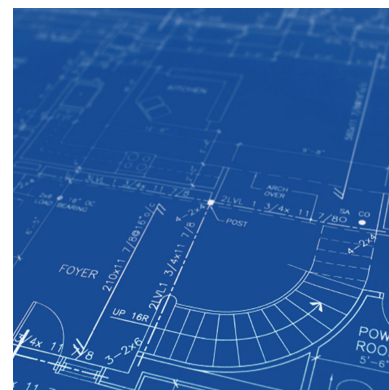
Made in the U.S.A.

Click for All Colors

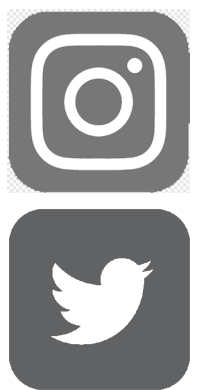
Weight: Type II 21 oz | Width: 54" | Backing: Osaburg | Match: Random Reversible | Repeat V 24" / H 52" |
 Fire Rating: Class A | Passes Class A NFPA 101 Life Safety Code | Passes NFPA 286 Corner Burn Test | Top Coat: Aqua Clear |



Click for CD2-NOU-18



Click for Full Product Specs



Click to be Social



Click for all Solutions