



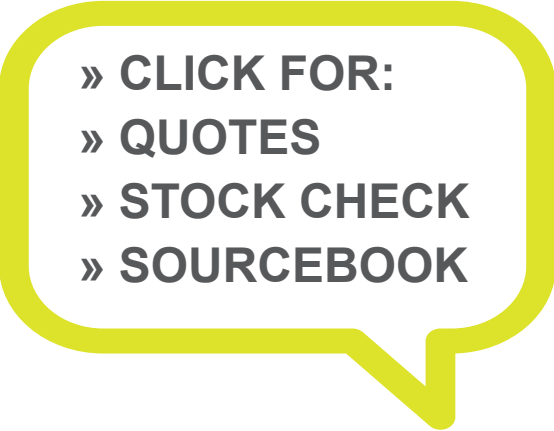
[Click for CSD-QUA-01](#)



[Click for CSD-QUA-02-05](#)



[Click for CSD-QUA-06](#)



[Click for CSD-QUA-07](#)



[Click for CSD-QUA-08](#)



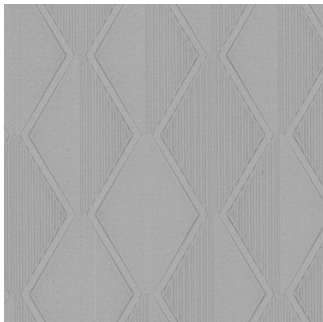
[Click for CSD-QUA-09](#)



[Click for CSD-QUA-10](#)



# Quadrille



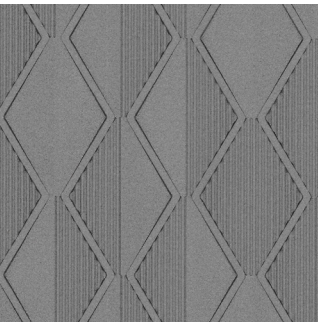
[Click for CSD-QUA-11](#)



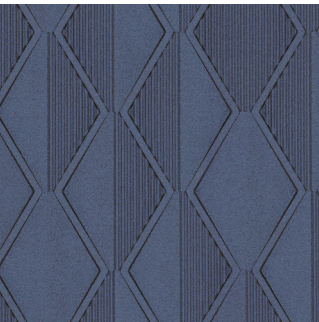
[Click for CSD-QUA-12](#)



[Click for CSD-QUA-13](#)



[Click for CSD-QUA-14](#)



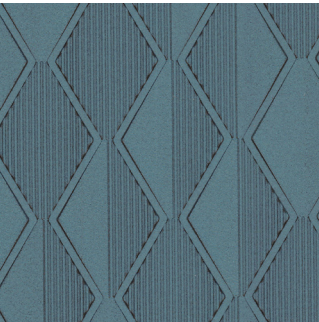
[Click for CSD-QUA-15](#)



[Click for CSD-QUA-16](#)



[Click for CSD-QUA-17](#)



[Click for CSD-QUA-18](#)



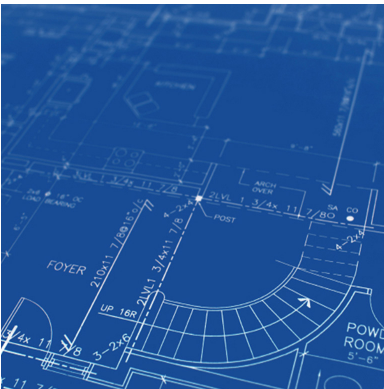
[Click for CSD-QUA-19](#)



[Click for CSD-QUA-20](#)



[Click for CSD-QUA-21](#)



[Click for Full Product Specs](#)



[Click to be Social](#)



[Click for all Solutions](#)

Made in the U.S.A.

[Click for All Colors](#)

Weight: Type II 32 oz | Width: 53”/54” | Backing: Osaburg | Match: Non-Reversible/ Straight Across | Top Coat: Aqua Clear | Fire Rating: Class A | Passes W-101 Quality Standard for Polymer Coated Fabric Wallcovering | Passes NFPA 286 Corner Burn Test |