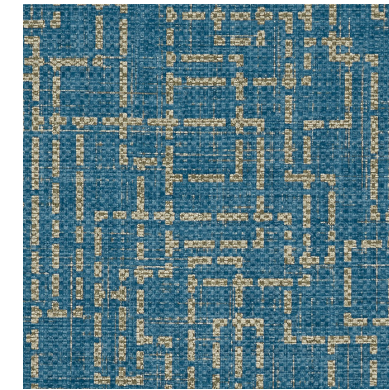
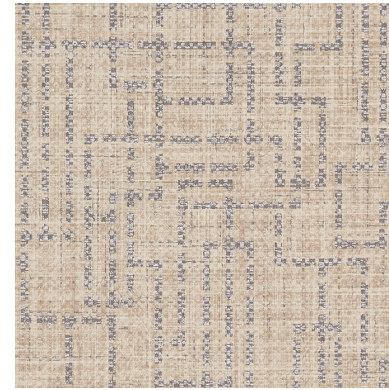




» **CLICK FOR:**  
 » **QUOTES**  
 » **STOCK CHECK**  
 » **SOURCEBOOK**



Click for CD2-TOR-01

Click for CD2-TOR-02

Click for CD2-TOR-03

Click for CD2-TOR-04

Click for CD2-TOR-05

Click for CD2-TOR-06

Click for CD2-TOR-07



Made in the U.S.A.

Click for All Colors

Weight: Type II 20 oz | Width: 54" | Backing: Osaburg | Match: Straight Across Reversible | Repeat V 24" / H 52" |  
 Fire Rating: Class A | Passes Class A NFPA 101 Life Safety Code | Passes NFPA 286 Corner Burn Test | Top Coat: Aqua Clear |



Click for CD2-TOR-08



Click for CD2-TOR-09



Click for CD2-TOR-10



Click for CD2-TOR-11



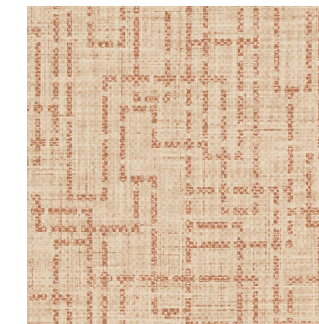
Click for CD2-TOR-12



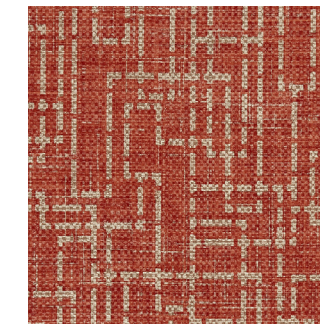
Click for CD2-TOR-13



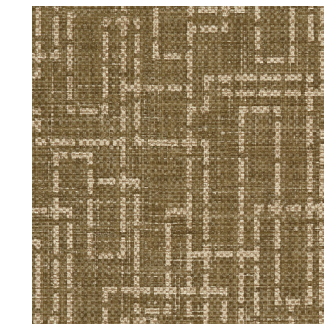
Click for CD2-TOR-14



Click for CD2-TOR-15



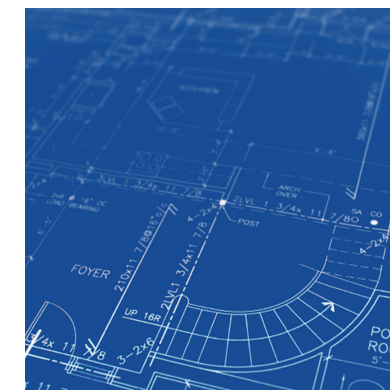
Click for CD2-TOR-16



Click for CD2-TOR-17



Click for CD2-TOR-18



Click for Full Product Specs



Click to be Social



Click for all Solutions